



**BREAKER
RESOURCES NL**

**A NEW SEARCH SPACE IN AUSTRALIA'S
PREMIER GOLD PROVINCE**

GOLD COAST RESOURCE SHOWCASE (13 JUNE 2012)

**Tom Sanders
Executive Chairman**



Our Business

- Listed on the ASX on 20 April 2012 (\$8.5M raising; closed early/oversubscribed)
- Incorporated in 2010 to take advantage of transformational developments in WA's Eastern Goldfields Superterrane, which accounts for 75% of Australia's gold
- The eastern half of the Eastern Goldfields Superterrane (EGST) is largely unexplored and is both a new search space and an active discovery area
- As result of “early mover” advantage, Breaker acquired eight 100%-owned projects on key structural targets - now largest tenement holder in EGST (5,500 km² including 190 km of Yamarna Shear; four undrilled greenstone belts)
- Subsequent to this we identified *three* previously undrilled projects with gold-in-soil anomalies comparable in magnitude to Tropicana (WMC mid-90's, +30ppb Au)
- 50,000m of drilling planned over next two years (drilling started a fortnight ago)
Targeting large deposits that typically host two thirds of the region's gold

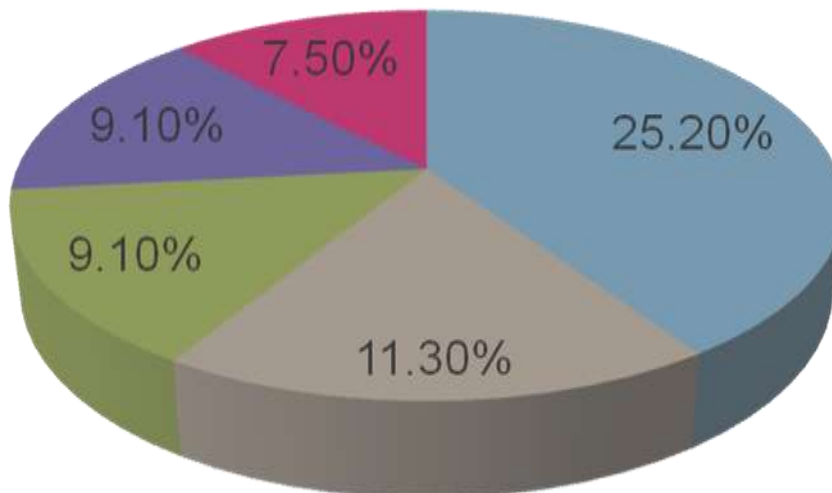


Capital Structure

Issued Securities			
Shares	55.1 million	IPO at \$0.20/share	(ASX: BRB)
Options	21.2 million	\$0.25 exercise	(ASX: BRBO)
	6.0 million	\$0.25/\$0.30 exercise	(unlisted)

Market Capitalisation \$11.6 million (11/6/12)
Cash +\$7 million
 (+\$300K on offer from EIS submissions)

Significant Shareholders (Top 7 with 62% - strong fund support)



Directors	25.2%
Geologic Resource Fund Ltd	11.3%
Altus Resource Capital Ltd	9.1%
CQS Asset Management Ltd	9.1%
Nestor Investment Management	7.5%
Total	62.2%



Board and Senior Management

Experienced team with a focus on shareholder value



Tom Sanders

- **Executive Chairman**

- Geologist with 34 years experience in exploration, mining and corporate management
- Extensive exposure to Eastern Goldfields
- Previously built a 2M oz gold inventory through discovery and acquisition



Mike Kitney

- **Non-executive Director**

- Process engineer with 37 years experience in the mining industry
- Vast project development and mine commissioning experience
- Current Chief Operating Officer at Kasbah Resources



Mark Edwards

- **Non-executive Director**

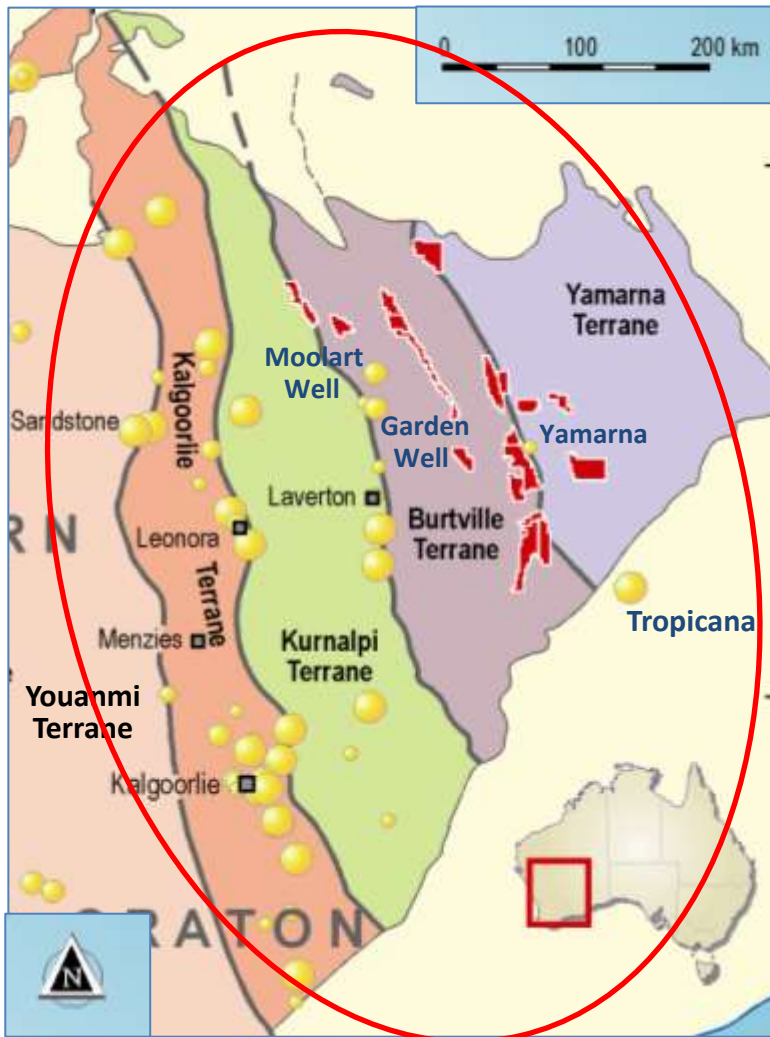
- Lawyer with 26 years experience in resources and corporate law
- Experience in ASX listings, joint ventures, project development agreements and project financing

Alastair Barker

- **Exploration Manager**

- Geologist with +20 years experience in exploration and mining

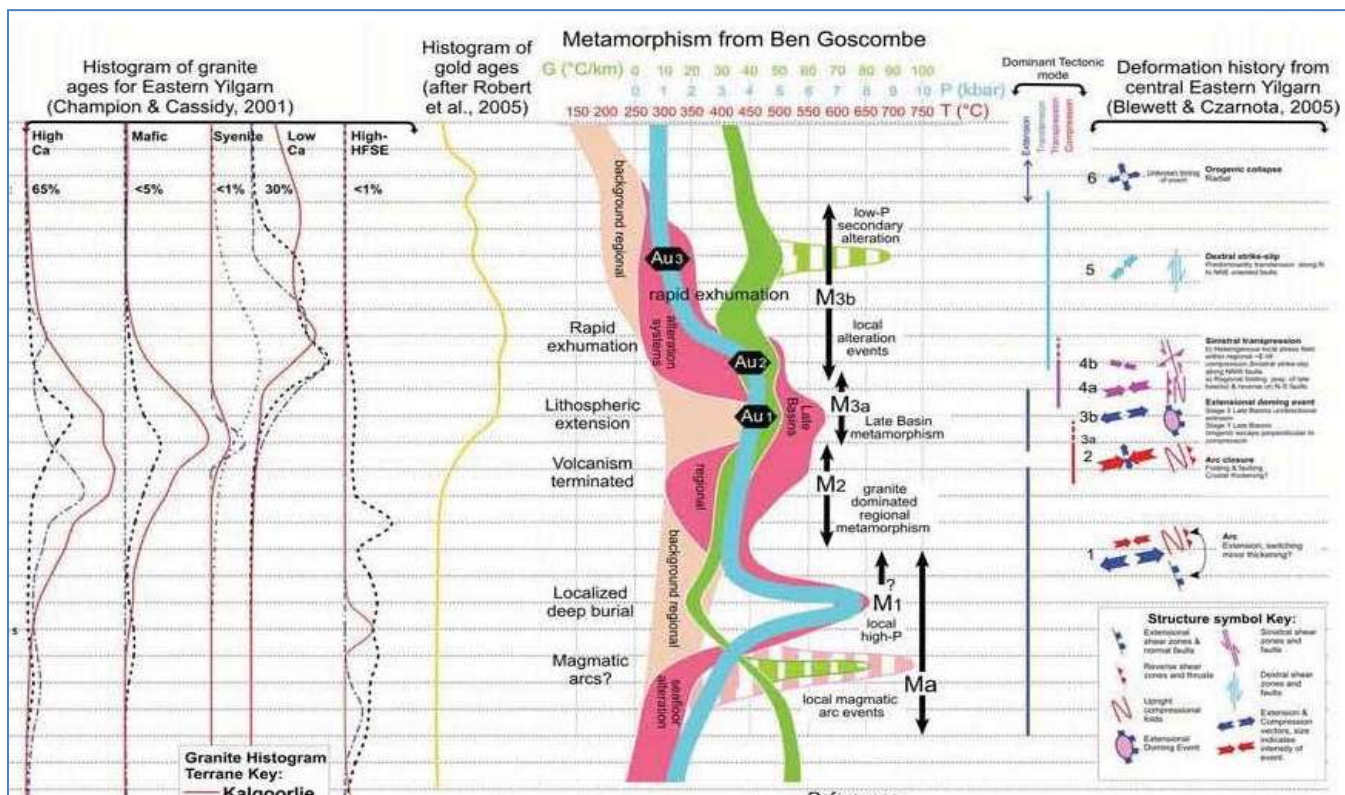
Project Location



Eastern Goldfields Superterrane

- Eight 100%-owned projects located in eastern half of Eastern Goldfields Superterrane (Yamarna/Burtville Terranes)
- Good roads, expanding infrastructure (new discoveries/mine developments)
- **Oct 2010** GSWA Geochronology
Yamarna Terrane = Kalgoorlie Terrane
Burtville Terrane = Youanmi Terrane
(plus new mapping, aeromagnetics etc)
- **Nov 2010** Breaker pegs tenements on major faults next to domes, jogs - *which control location of gold in well explored parts of the Goldfields*

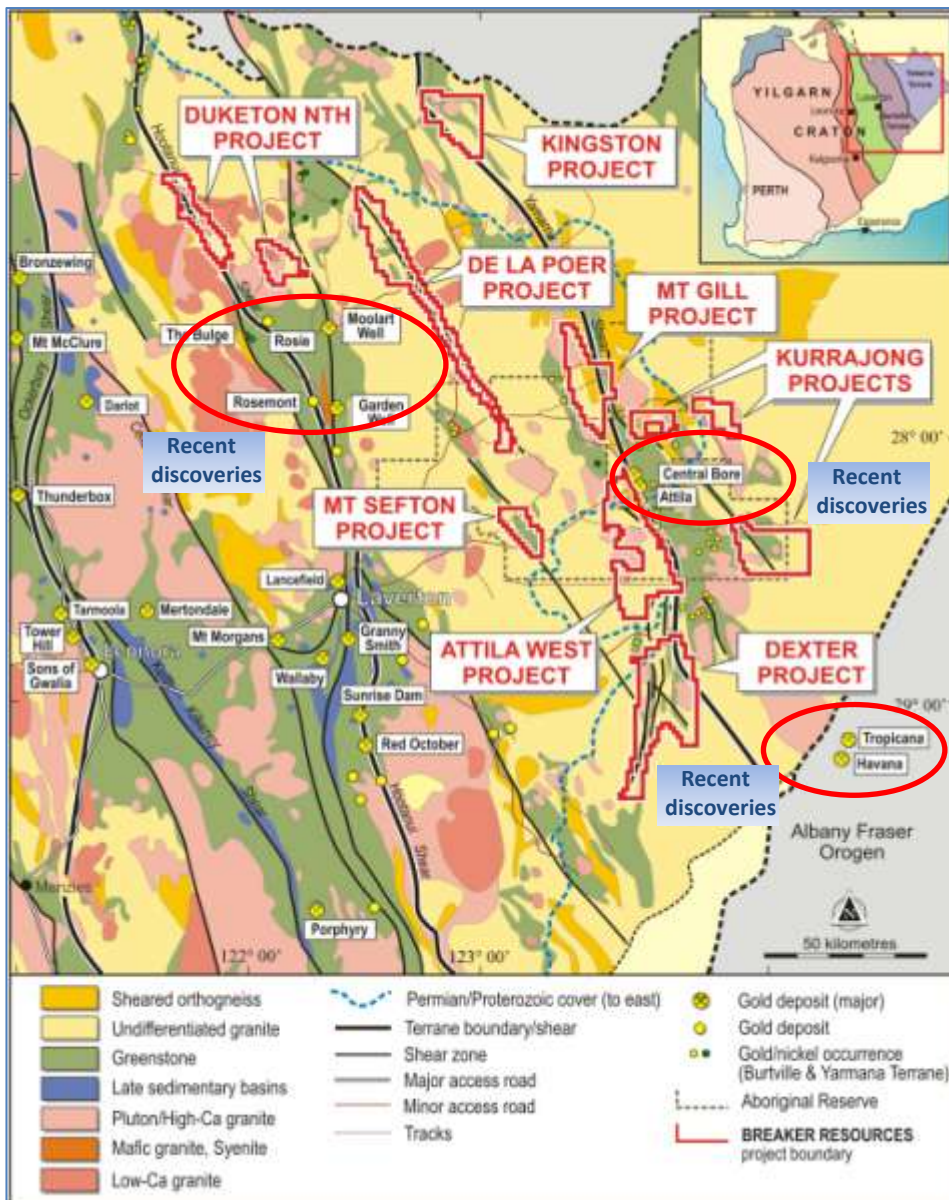
10 Years Ground-Breaking Developments



Key Geological Developments (relevant to finding gold)

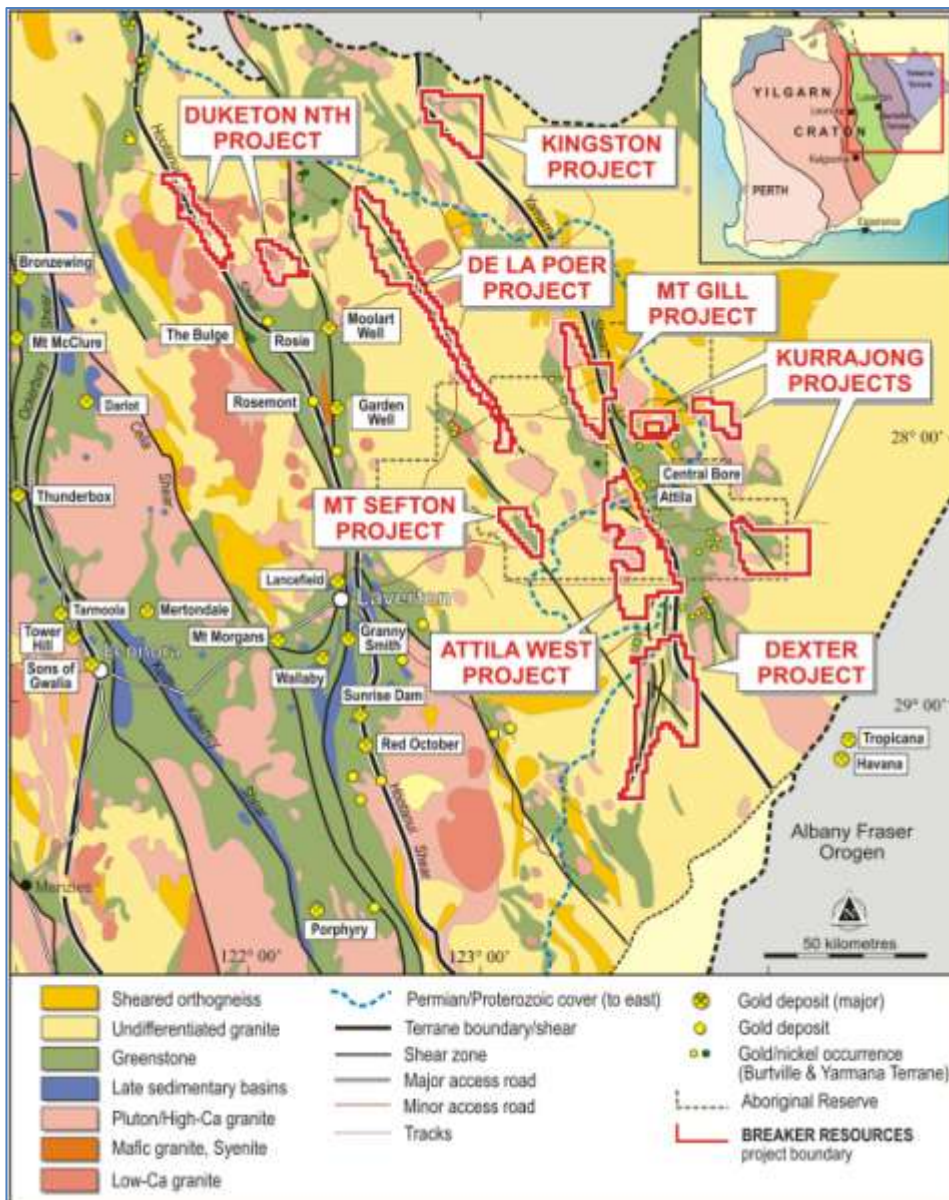
- Structural and metamorphic history rewritten
- Three gold events dated for first time (most gold post-dates the granite)
- Importance of major deep faults recognised (mantle connection)
- New data available to map out the major deep faults

Project Overview



- Main focus on Yamarna Shear
 - Mt Gill Project
 - Attila West/Kurrajong Projects
 - Dexter Project
- Projects include:
 - 190 kms of Yamarna Shear Zone
 - Other major faults (eg Duketon Nth)
 - Four undrilled greenstone belts
- Minor historical exploration
 - 3 projects with undrilled gold-in-soil anomalies comparable in magnitude to Tropicana (WMC mid-90's, +30ppb Au)
- Discoveries made *afterwards*
 - Moolart Well (2002), Tropicana (2005), Central Bore and Garden Well (2009)

Exploration Program



Three prong exploration strategy

- (i) Early drilling of known soil anomalies
- (ii) Early drilling structural targets
- (iii) Synchronous **low-cost** soil sampling to screen for big deposit signatures using technology not available 15 years ago!

Prior limitations for exploration addressed

- New data and new technology
- Cosmo/Yilka-Breaker agreement over Aboriginal Reserves executed
- Cover often thin (generally <10m), but thicker at Kingston/Dexter
➔ cost-effective drilling, soils

The “Early Mover” Advantage

Two thirds of the gold in 10% of the deposits

Understanding the search space concept

- In any search space, the bulk of the metal is in a few large deposits
- The largest deposits in any search space are usually found early because they generally have the most obvious signatures
- Any given search space will progressively become exhausted over time, resulting in smaller and higher cost discoveries
- The most important discontinuities in the exploration business are those which significantly expand the search space through innovation
 - New technology (extraction and exploration)
 - New concepts (often linked to technology)



Fennoscandian Exploration and Mining 2009

Exploration Targeting in a Business Context

T. Campbell McCuaig – CET
Pietro Guj – CET

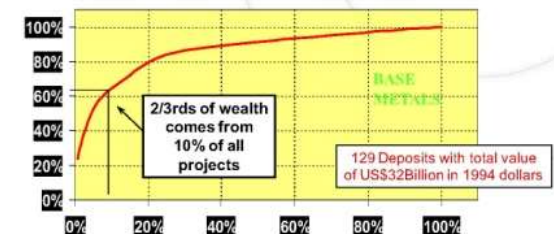
Jon Hronsky – Western Mining Services
Richard Schodde – MinEx Consulting



Source by EXPLORATION TARGETING

SEARCH SPACE OBSERVATION 1 : Most of the mineral industry's wealth is captured by a handful of giant deposits

Cumulative NPV @ 8% discount rate



Base Metal Mines discovered in
Canada & Australia to 1988

Hronsky (2004)

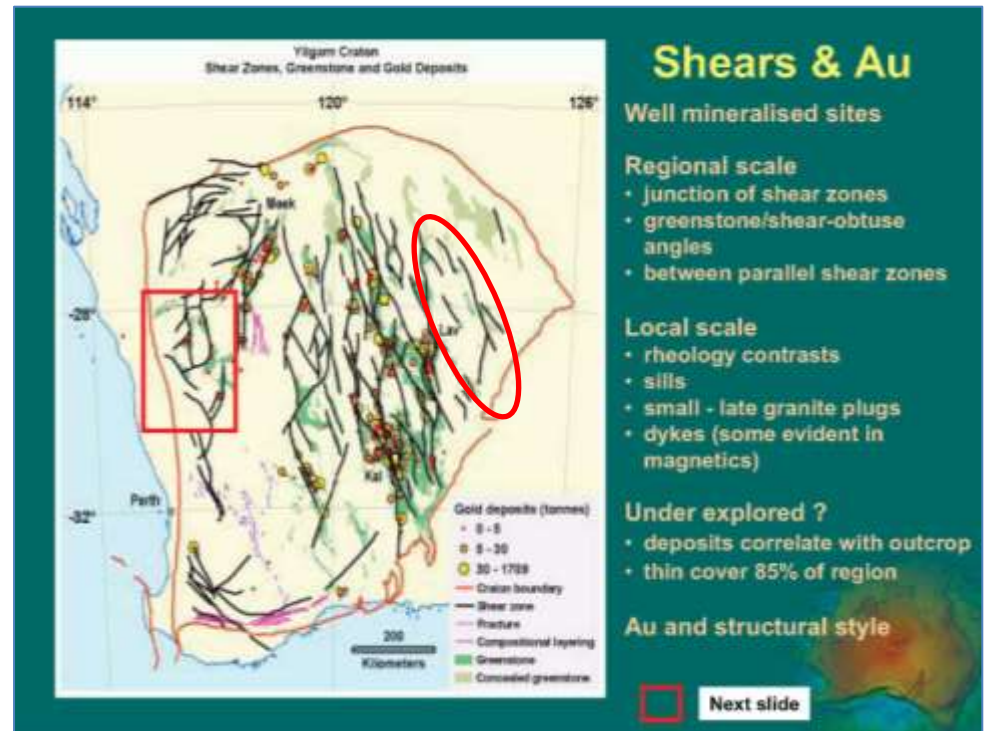
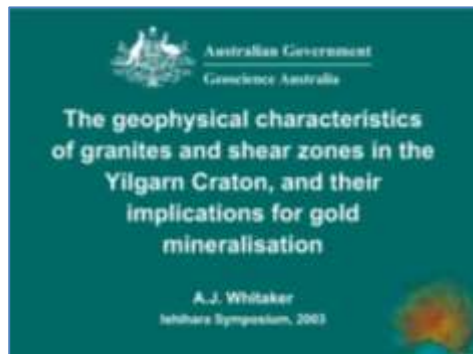
Source : Derived from Mackenzie 1995

Where do you look for Giant Gold Deposits?

- Eastern Goldfields Superterrane (high endowment)
- Underexplored areas next to big shear zones, anticlines (bends, intersections)
- Along strike from known gold (preferably with soil anomalies/infrastructure)
- Large-area portfolios with ability to cheaply screen for big signatures



Typical access

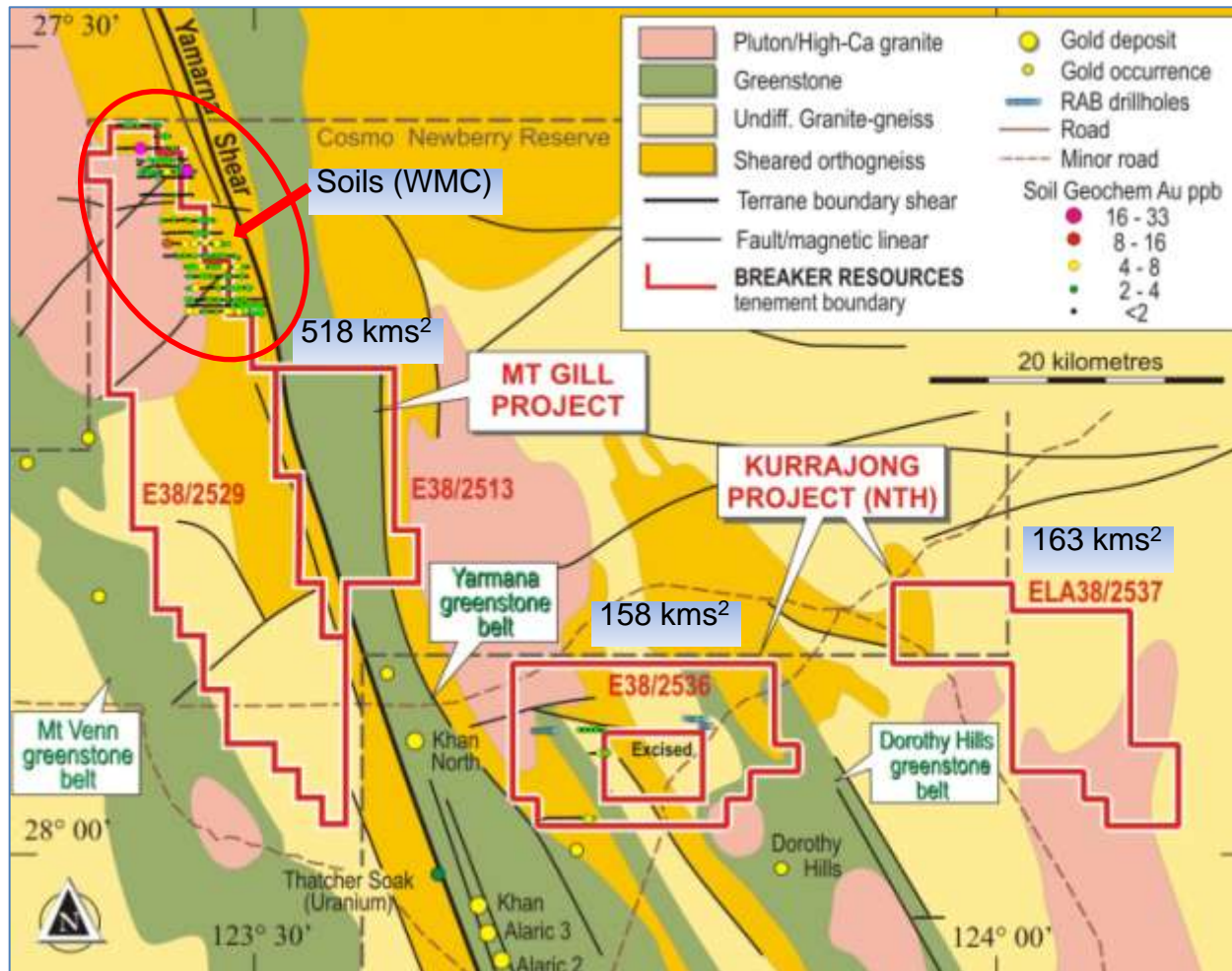


Interp. based on Geoscience Australia (2003)
and Goscombe (2010)



Mt Gill/Kurrajong North

Interpreted geology (Geoscience Australia, 2003)



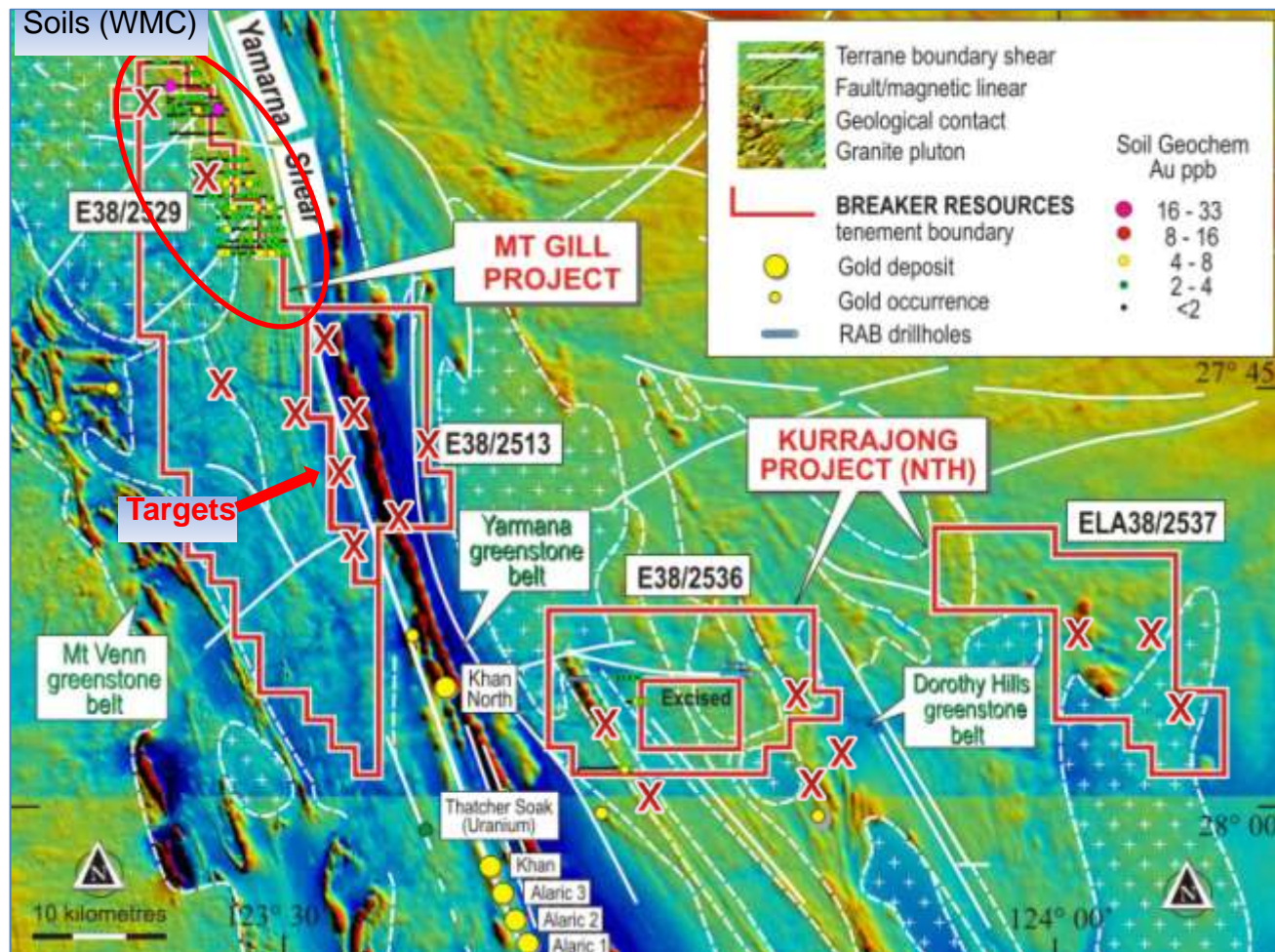
- Footwall gneiss = part assimilated greenstone
- Soil geochem (14km x 4km; WMC)
 - Anomalous soils to 33 ppb gold in sand (not drilled)
- Cover thin (5-20m)
- Targets from geochem and aeromag

Any soil anomaly in sand is potentially significant

(Tropicana 4-31ppb Au; Garden Well 3-25ppb Au; Moolart 3-7ppb Au)

Mt Gill/Kurrajong North

Soil geochem and aeromagnetic image highlighting targets



THE PLAN

- Multi-km soil gold anomalies in sand - drill
- Multiple targets from aeromag - drill/scope (X)
- Broad geochem over structural targets and extensions

TARGETS (X) Major fault/anticline intersection, Yamarna shear bend, de-mag zones, greenstone



Attila West/Kurrajong South



Attila West landscape



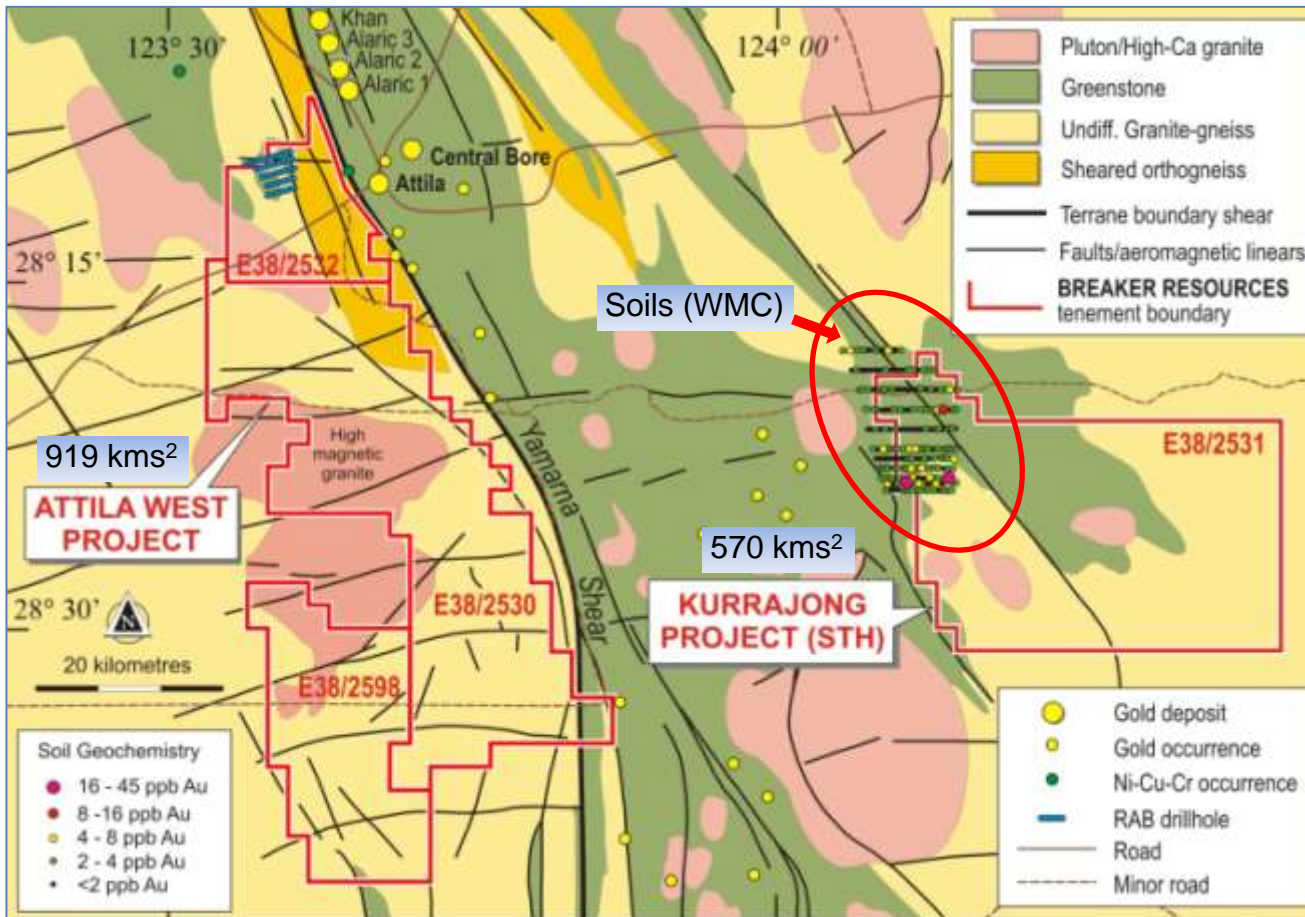
Attila West – sheared mafic footwall rocks



Attila West/Kurrajong South

Outcrop geology

Interpreted geology with gold-in-soil, previous drilling



- Soil geochem (9km x 5km; WMC)
→ Anomalous soils to 45 ppb gold in sand (anticline/fault setup)
- Cover
5-10m Attila West
~40m Kurrajong
- Reconnaissance drilling to start next week

45ppb Au – the highest in WMC's +5,000 sample regional survey (WMC did not drill as no access agreement)



Dexter Project

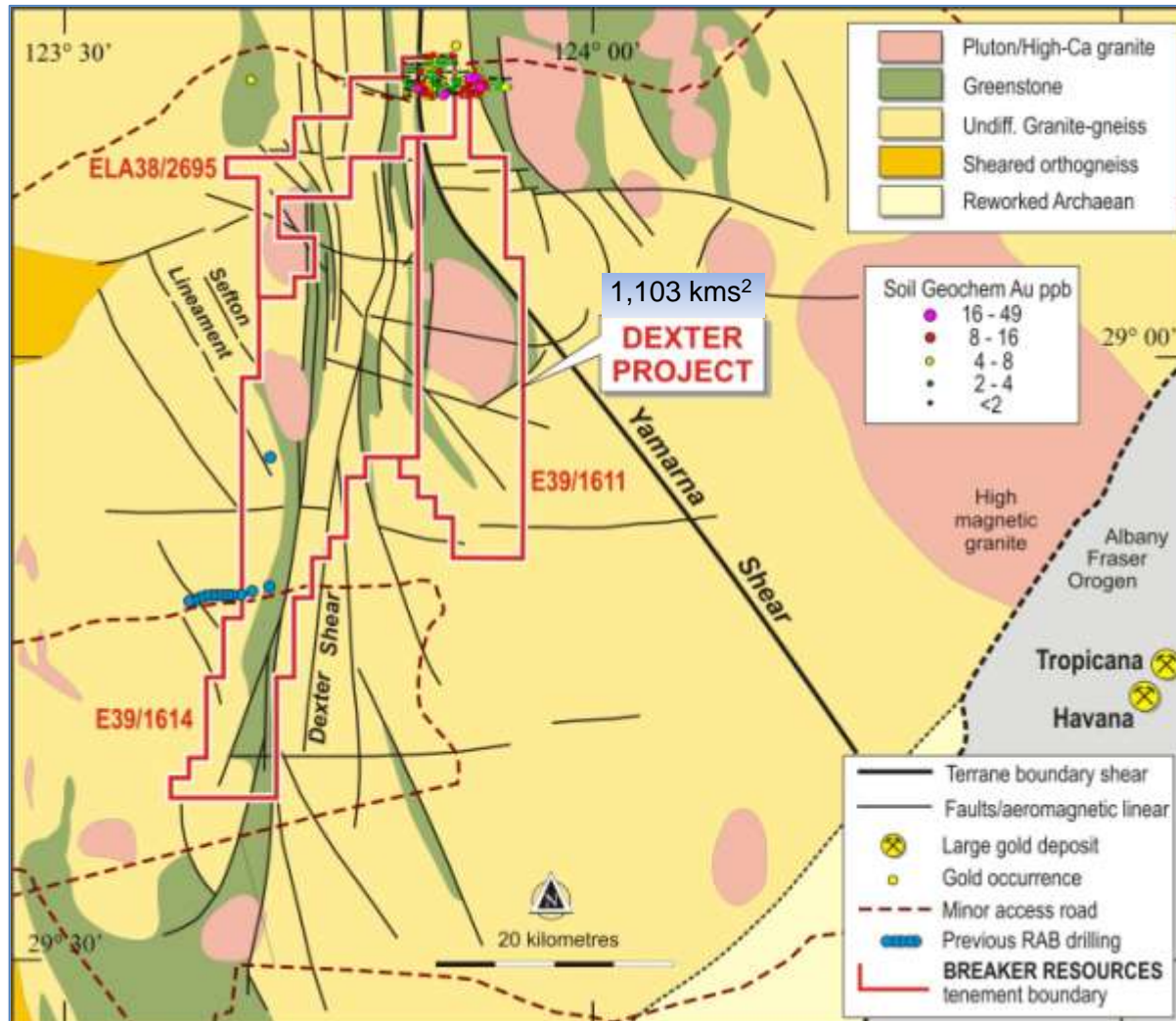


Dexter Landscape - 32ppb Au gold-in-sand anomaly



Dexter Project

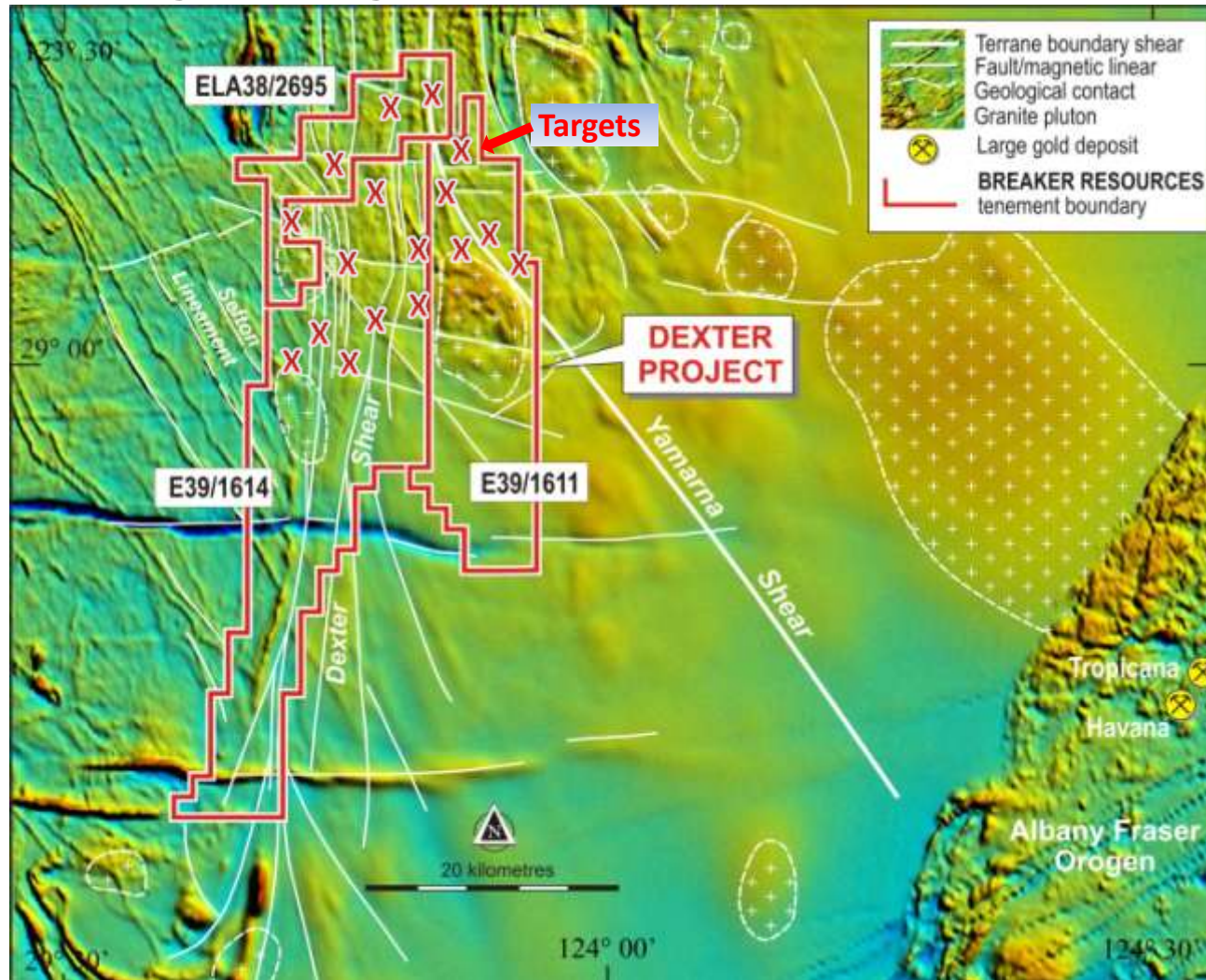
Interpreted geology with gold-in-soil, previous drilling



- 27 km of Yamarna Shear, 60 km of Dexter Shear along strike from gold mineralisation
- Soil anomalies to 32 ppb Au in sand (WMC mid 90s)
- Outstanding structural setup
- Reconnaissance drilling started late May 2012
- Cover: -
10m to 60m in north
Deeper in central/south area
- Successful submission for \$150K in drill costs (Exploration Incentive Scheme)

Dexter Project

Aeromagnetic image



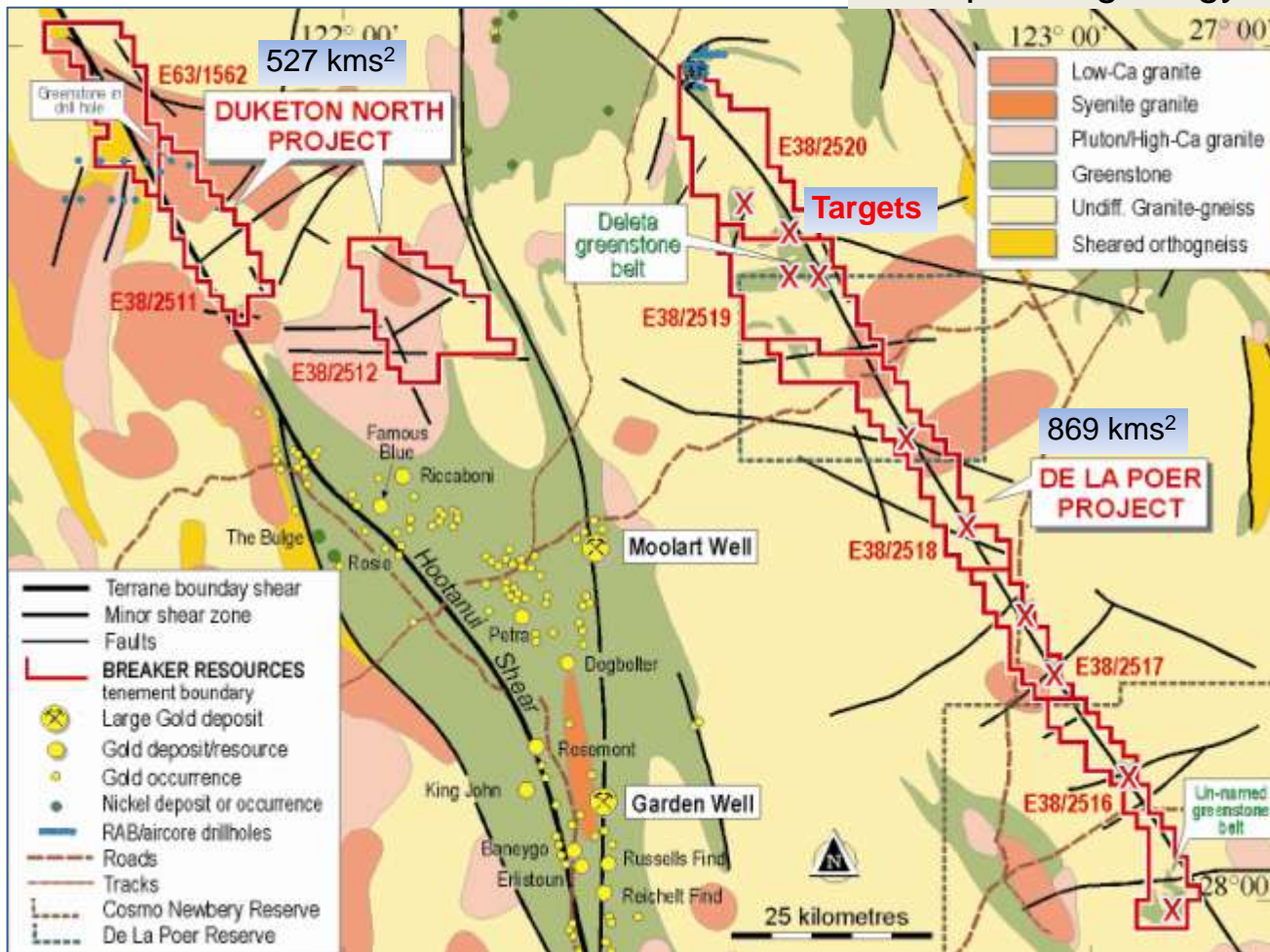
THE PLAN

- (i) drill targets/scope (X) (ii) systematic geochem/geophys (iii) drill



Duketon North/De La Poer Projects

Location and Background



Deleta greenstone belt

De La Poer Project

- De La Poer Fault and Deleta greenstone belt only identified 1999
- Essentially unexplored
- Targets (X) along 120km of De La Poer Fault

- Duketon North – targets gold assoc with Hootanui Shear; 43km strike; Au/Ni along strike
- Previous exploration, 6 AC holes, 3kms apart (BHP, 1995); *greenstone not followed up*



Summary

- Breaker...a small company with the largest tenement holder in a new search space in Australia's premier gold province
- Eight 100%-owned projects on major shears in active discovery area that includes 190 km of Yamarna Shear; four undrilled greenstone belts)
- Three projects with undrilled gold-in-soil anomalies comparable in magnitude to Tropicana (WMC mid-1990's, +30ppb Au) along strike from later gold discoveries
- +50,000m drilling planned over next two years...reconnaissance drilling started (\$300K in additional drill funding offered by Exploration Incentive Scheme)
- Cost-effective geochemical screening now possible to detect big deposit signatures
- Well leveraged to exploration success (tight capital structure, +\$7M in cash)
- Proven management with solid support from international funds



BREAKER RESOURCES NL

THANK YOU





Disclaimer

This presentation has been prepared by Breaker Resources NL (“Company”) in connection with providing general and background information on the Company.

This presentation should not be relied upon as a representation of any matter that an advisor or potential investor should consider in evaluating the Company. The Company and its related bodies corporate or any of its directors, agents, officers or employees do not make any representations or warranty, express or implied, as to or endorsement of the Company, the accuracy or completeness of any information, statements or representations contained in this presentation, and they do not accept any liability whatsoever (including in negligence) for any information, representation or statement made in or omitted from this presentation.

This document may contain certain forward-looking statements which involve known and unknown risks, delays and uncertainties not under the Company’s control which may cause actual results, performance or achievements of the Company to be materially different from the results, performance or expectations implied by these forward looking statements. The makes no representation or warranty, express or implied, as to or endorsement of the accuracy or completeness of any information, statements or representations contained in this presentation with respect to the Company. Any discussion in relation to Exploration Targets, implied or stated, is only conceptual in nature.

Investors are advised that by their nature as visual aids, presentations provide information in a summary form. Investors are urged to read supporting information in full in ASX releases.

This presentation does not constitute an offer of securities in the Company. Nor, should this presentation be relied upon by any advisor or potential investor in making an investment decision in the Company

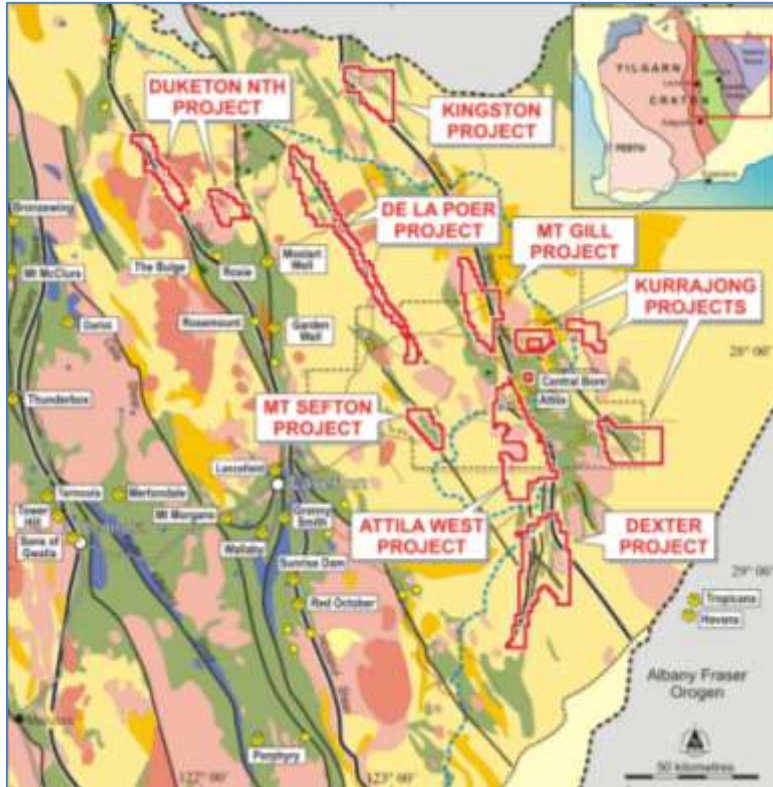
Competent Person Statement

The geological information in this report that relates to Exploration Results and Mineral Resources is based on information reviewed by Mr Tom Sanders who is a member of the Australasian Institute of Mining and Metallurgy. Mr Sanders is an Executive of Breaker Resources NL and has been engaged on an 80% of full time basis. Mr Sanders has sufficient experience which is relevant to the style of mineralisation and type of deposit under consideration to qualify as a Competent Person as defined in the 2004 Edition of the “Australasian Code for the Reporting of Exploration Results, Mineral Resources and Ore Reserves”. Mr Sanders consents to the inclusion in the report of the matters based on this information in the form and context in which it appears.

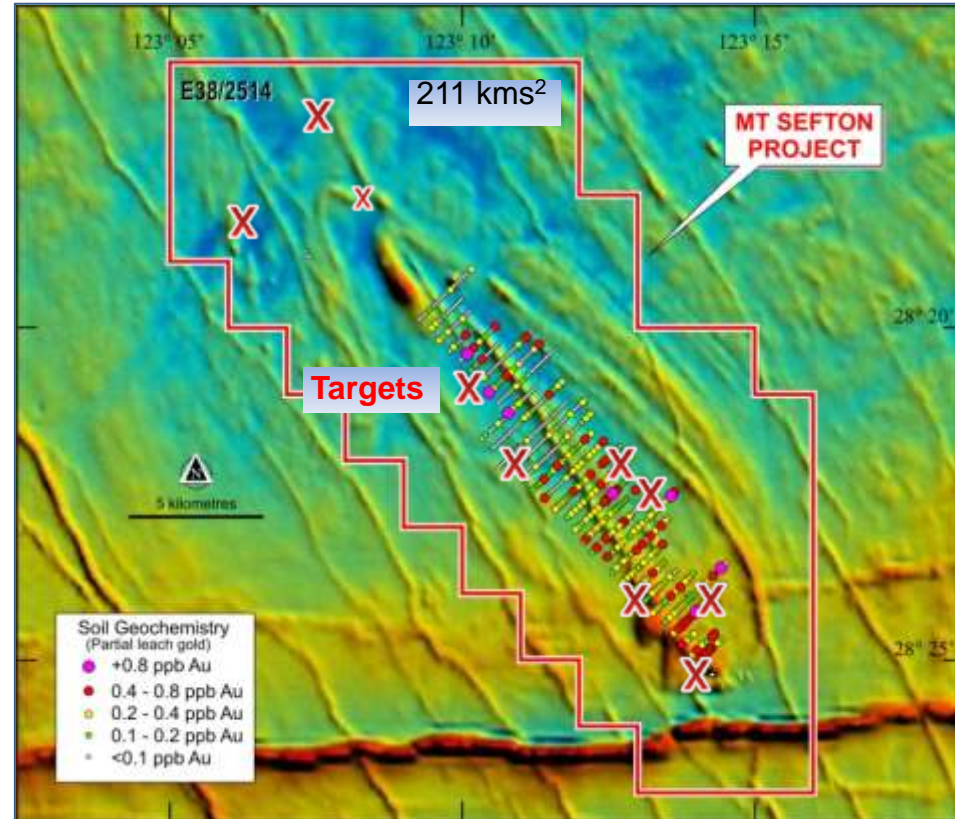


Mt Sefton Project

Mt Sefton Location



Aeromagnetic image with gold-in-soil (1998)



- Previously undrilled greenstone belt on Sefton Lineament; gold on strike at Cosmo Newbery
- Soil anomalies (Kilkenny, 1995) *not drilled* as no access agreement
- Soil anomalies coincide with structures/dolerite apparent on *later* aeromagnetic/mapping

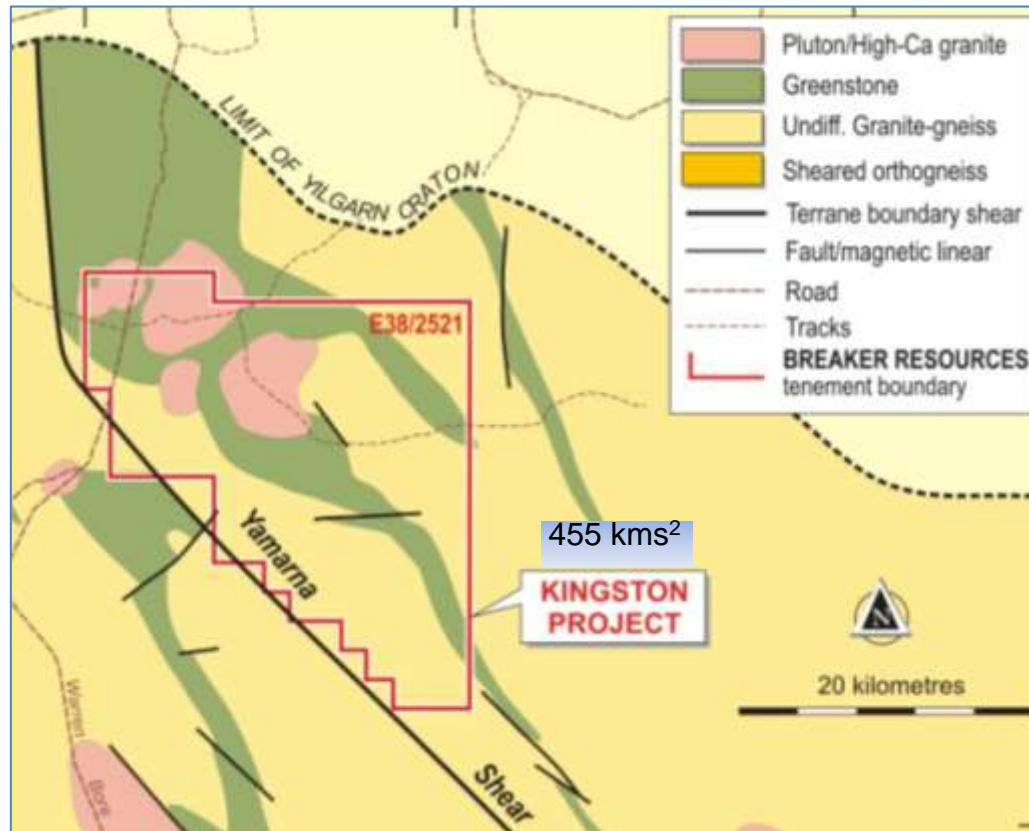
THE PLAN

(i) drill targets (X) (ii) extensional geochem (iii) drill

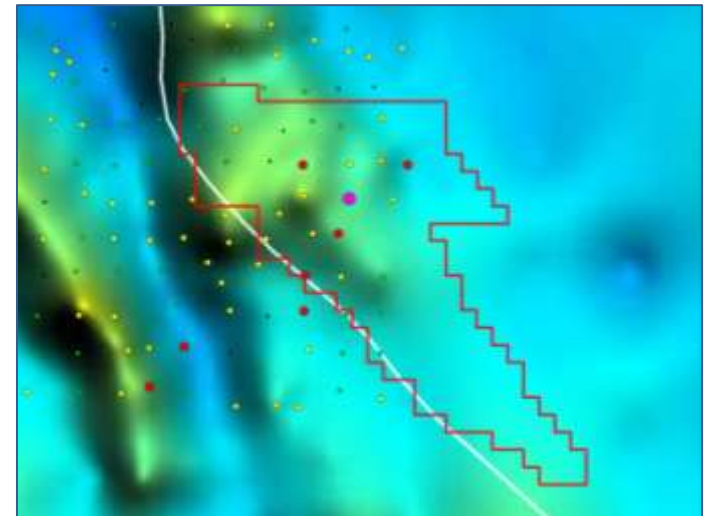


Kingston Project

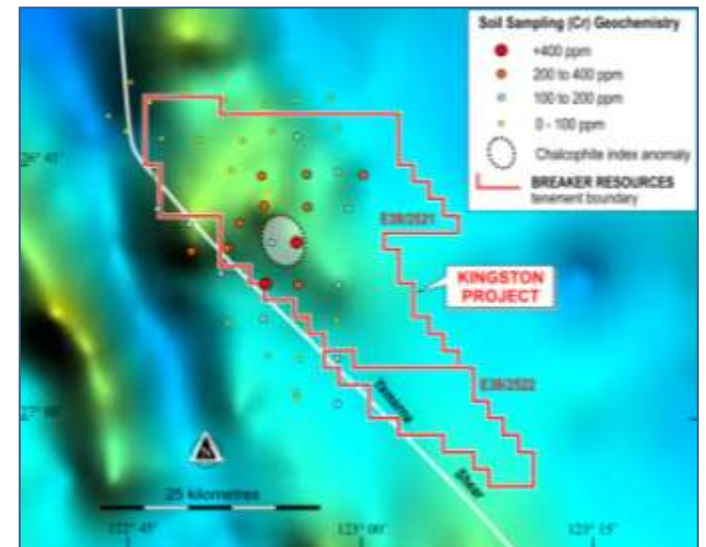
Interpreted Geology (Geoscience Australia)



- 35km-long undrilled greenstone belt on Yamarna Shear
- Gravity/As-Mo-Bi-W anomaly (govt); gold indicators
- Cover ~200m; Successful submission for \$150K in drill costs (Exploration Incentive Scheme)



Imaged Mo over gravity



Imaged Cr over gravity