

## **Drilling Commences at Lake Roe Project**

Breaker Resources NL (ASX: BRB, **Breaker**) is pleased to announce the start of drilling at its 100%-owned Lake Roe Project, located 100km east of Kalgoorlie (Figure 1).

The main target of the drilling is a 4km-long zone of supergene gold mineralisation defined by historical drilling (maximum grade of 4m at 0.71g/t Au; WAMEX Report A34230). The mineralisation is largely confined to a layered dolerite in an area of shallow cover. The dolerite has a domal geometry and is situated geometrically above the Keith-Kilkenny Lineament, similar to that at the Karari-Carosue Dam and Karonie gold deposits located along strike (Figure 2).

An 80 hole aircore drilling program of 3,200m is scheduled for completion in approximately two weeks. The main objective of the drilling is to assess the continuity of the supergene mineralisation and to use the gold distribution, in conjunction with bottom-of-hole multi-element geochemistry, to identify the geometry of a possible bedrock source in preparation for reverse circulation drilling.

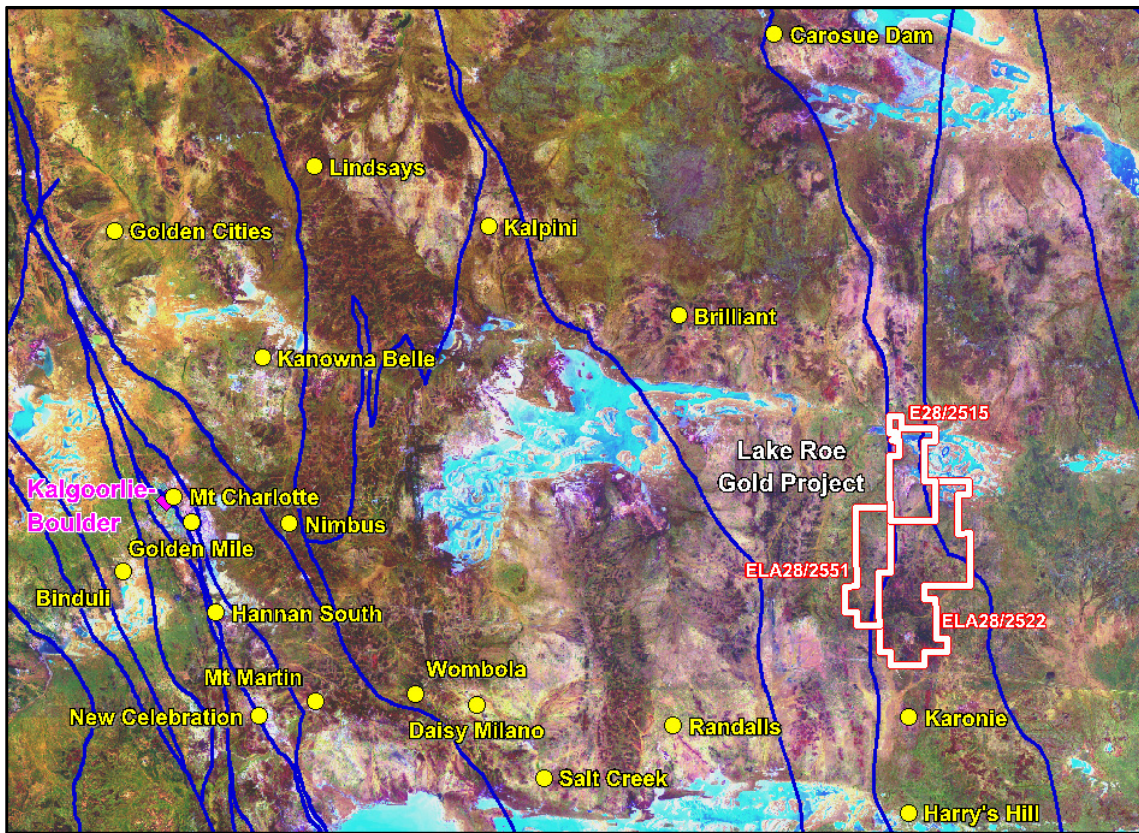
Tom Sanders, Executive Chairman of Breaker, said "The gold potential of the area was identified by previous large company explorers but systematic follow-up of the results did not occur, apparently due to non-geological factors such as inconvenient tenement boundaries at the time and changes in company priorities and market conditions."

"The Lake Roe Project is a compelling target for many reasons and offers scope for a substantial discovery. The confinement of the supergene gold to the dolerite is encouraging and suggests a possible bedrock source in the dolerite."

### ***Drill Targets/Background***

The strong supergene gold anomalism was identified by historic vertical rotary air blast and aircore drilling undertaken in the period 1991 to 1998. The anomalous gold generally starts at a depth of 30m and occurs in the active weathering front. The bedrock below this zone is essentially untested.

Drill chips from this previous drilling show clear evidence of sulphide and carbonate alteration within the dolerite to the north and south of the Lake Roe salt lake (Figure 2). No drilling was undertaken within the salt lake and the lake cover appears to be thin, based on the presence of outcrop within the lake to the immediate west of the dolerite.



**Figure 1: Lake Roe Gold Project Location Plan with Regional Shear Zones**

The targeted dolerite forms part of a 1,500m-thick greenstone sequence located in a regional-scale “pressure shadow” (low mean stress) site at the northern tip of a large granite body. Visual observations, supported by selective geochemical sampling, indicate the dolerite is fractionated and therefore highly favourable for hosting gold (examples include the Golden Mile and Junction deposits). Structural disruption of the dolerite is locally evident in aeromagnetic data and is spatially associated with magnetic lows, suggesting alteration-related magnetite destruction.

The planned drilling will target structural breaks with demagnetisation features, although some lines will be extended across the stratigraphy to establish geological control. The eastern side of the domal dolerite is situated adjacent to the Swan Lake Granite, a compositionally-zoned intrusion that forms part of a syenitic suite, indicating a deep and therefore favourable fluid source area. Similar rocks are present at the Karari gold deposit.

The program will be conducted on an 80m drill spacing with a line spacing of 400m or 800m. Holes will be angled at 60 degrees to the west to intersect the east-dipping stratigraphy and structure at the optimum angle.

Breaker has recently expanded its footprint at the Lake Roe Project to an overall area of 352km<sup>2</sup> with a strike length of 32km. The project currently consists of one granted Exploration Licence (E28/2515), which is the focus of the drilling, and two applications, one of which was submitted during June 2015.

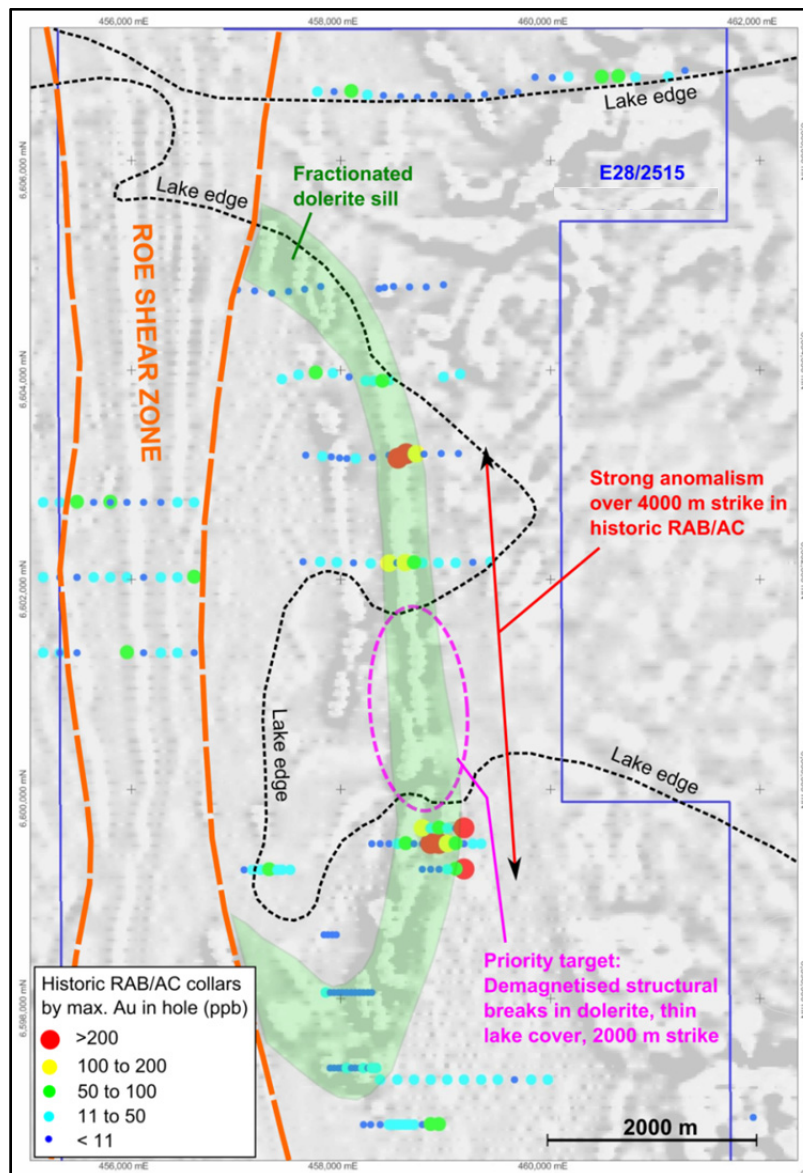


Figure 2: Lake Roe Project – E28/2515



**Tom Sanders**  
 Executive Chairman  
 Breaker Resources NL

17 July 2015

For further information on Breaker Resources NL please visit the Company's website at [www.breakerresources.com.au](http://www.breakerresources.com.au), or contact:

**Tom Sanders**  
 Tel: +61 8 9226 3666  
 Email: [breaker@breakerresources.com.au](mailto:breaker@breakerresources.com.au)



**About Breaker**

Breaker Resources NL is a large tenement holder in WA's Eastern Goldfields Superterrane in the Yilgarn Craton. Its exploration strategy focuses on the use of modern multi-element regional soil geochemistry to identify large gold systems near major crustal faults in unexplored parts of a world class gold province concealed by transported cover. Since listing in April 2012, Breaker has identified multiple, large, drill-ready targets on all retained projects, several of which are located along strike from significant gold discoveries.

**COMPETENT PERSONS STATEMENT**

The information in this report that relates to Exploration Targets and Exploration Results is based on information compiled by Tom Sanders, Competent Person, who is a Member of The Australasian Institute of Mining and Metallurgy. Mr Sanders is an executive of Breaker Resources NL and his services have been engaged by Breaker on an 80% of full time basis; he is also a shareholder and option holder in the Company. Mr Sanders has sufficient experience that is relevant to the style of mineralisation and type of deposit under consideration and to the activity being undertaken to qualify as a Competent Person as defined in the 2012 Edition of the 'Australasian Code for Reporting of Exploration Results, Mineral Resources and Ore Reserves'. Mr Sanders consents to the inclusion in the report of the matters based on his information in the form and context in which they appear.