



BREAKER
Resources NL

**A NEW GOLD SYSTEM IN
AUSTRALIA'S PREMIER GOLD PROVINCE**

**Tom Sanders, RIU Resources Round-up
Sydney, 14-16 May 2013**

**ASX Code: BRB
www.breakerresources.com.au**

Cautionary Statement

DISCLAIMER

This presentation has been prepared by Breaker Resources NL ("Company") in connection with providing general and background information on the Company. This presentation should not be relied upon as a representation of any matter that an advisor or potential investor should consider in evaluating the Company. The Company and its related bodies corporate or any of its directors, agents, officers or employees do not make any representations or warranty, express or implied, as to or endorsement of the Company, the accuracy or completeness of any information, statements or representations contained in this presentation, and they do not accept any liability whatsoever (including in negligence) for any information, representation or statement made in or omitted from this presentation.

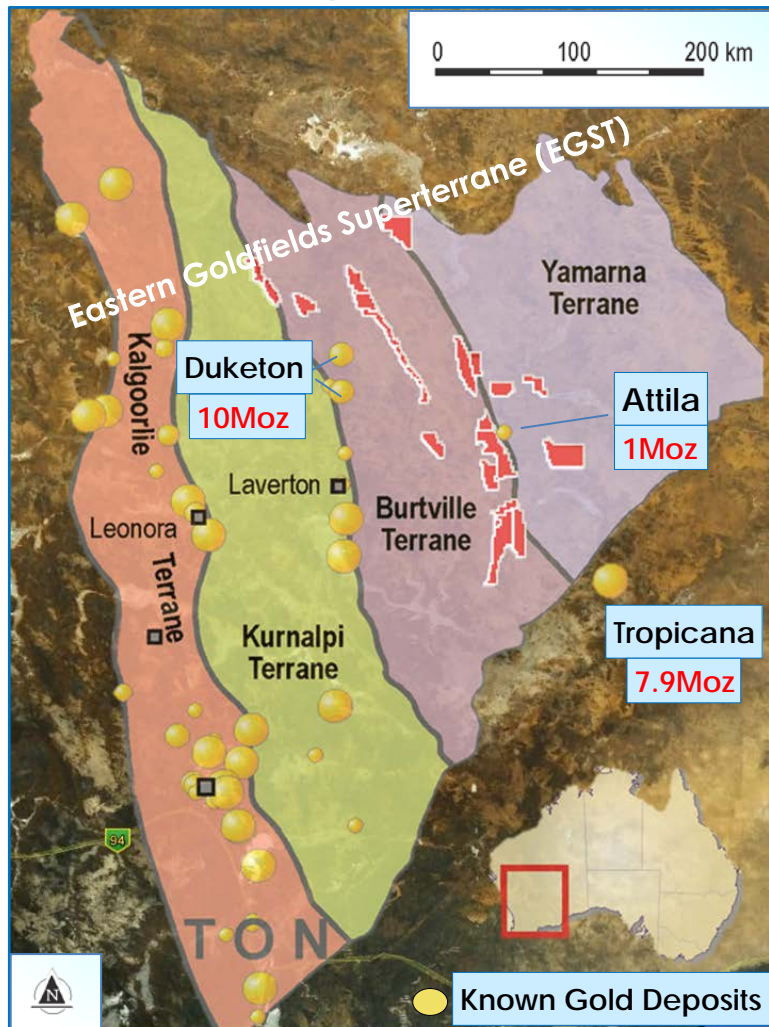
This document may contain certain forward-looking statements which involve known and unknown risks, delays and uncertainties not under the Company's control which may cause actual results, performance or achievements of the Company to be materially different from the results, performance or expectations implied by these forward looking statements. The Company makes no representation or warranty, express or implied, as to or endorsement of the accuracy or completeness of any information, statements or representations contained in this presentation with respect to the Company. Any discussion in relation to Exploration Targets, implied or stated, is only conceptual in nature.

Investors are advised that by their nature as visual aids, presentations provide information in a summary form. Investors are urged to read supporting information in full in ASX releases. This presentation does not constitute an offer of securities in the Company nor should this presentation be relied upon by any advisor or potential investor in making an investment decision in the Company.

COMPETENT PERSONS STATEMENT

The geological information in this report that relates to Exploration Results is based on information reviewed by Mr Tom Sanders who is a member of the Australasian Institute of Mining and Metallurgy. Mr Sanders is an Executive of Breaker Resources NL and has been engaged on an 80% of full time basis. Mr Sanders has sufficient experience which is relevant to the style of mineralisation and type of deposit under consideration to qualify as a Competent Person as defined in the 2004 Edition of the "Australasian Code for the Reporting of Exploration Results, Mineral Resources and Ore Reserves". Mr Sanders consents to the inclusion in the report of the matters based on this information in the form and context in which it appears.

Eastern Goldfields Superterrane (EGST)



- ✦ Established to capitalise on landmark changes affecting WA's Eastern Goldfields Superterrane (EGST) which accounts for 75% of Australia's gold
- ✦ Breaker now largest tenement holder in the EGST after "early mover" pegging of key structures in Nov 2010 (eight 100%-owned projects, 5,500km²)
- ✦ **Early success on unexplored ground**
 - Large new gold system identified at Dexter Project (initial RC drilling in progress to test potential)
 - Significant (+10km) gold-in-soil anomalies identified at Mt Gill and Kurrajong South Projects
- ✦ **Business strategy...shareholder value/leverage**
Growth via discovery using modern soil geochem to find "company making" gold deposits in large unexplored parts of a world class gold province

Corporate Overview

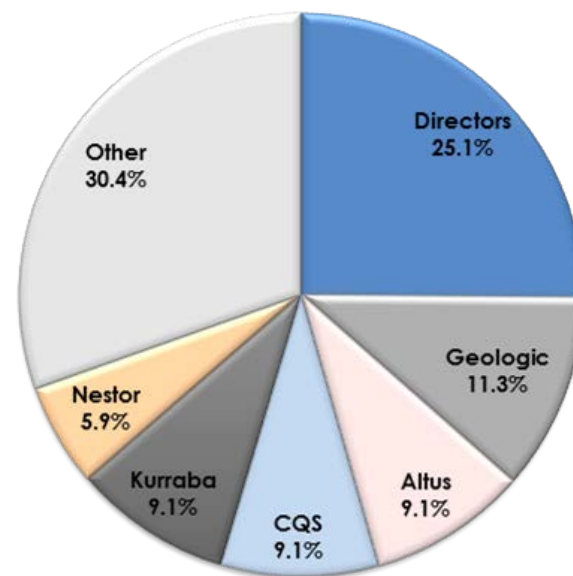
Capital Structure (Listed April 2012, \$0.20 par)

- | | |
|---|--|
| ✦ Fully paid shares: 55.1 million | ✦ Market cap (\$0.35): ~\$19.3 million |
| ✦ Listed options: 21.2 million
(\$0.25 Dec 2014) | ✦ Cash: \$3.2 million (31 March 2013) |
| ✦ Unlisted options: 8.1 million | ✦ Top 20 investors: 88.4% |

Breaker Share Price vs All Ords Gold Index BRB vs XGD - One Year to May 2013



Share register dominated by large funds



Experienced mining industry professionals focused on shareholder value

Tom
Sanders



Executive Chairman

- Geologist with 35 years experience in exploration, mining and corporate management
- Extensive exposure to Eastern Goldfields region; previously built a 2Moz gold inventory

Mike
Kitney



Non-Executive Director

- Process engineer with 38 years experience in the mining industry
- Current Chief Operating Officer at Kasbah Resources

Mark
Edwards



Non-Executive Director

- Lawyer with 27 years experience in resources and corporate law
- Experience in ASX listings, joint ventures, project agreements and project financing

Alastair
Barker



Exploration Manager

- Geologist with +20 years experience in exploration and mining

Michelle
Simson

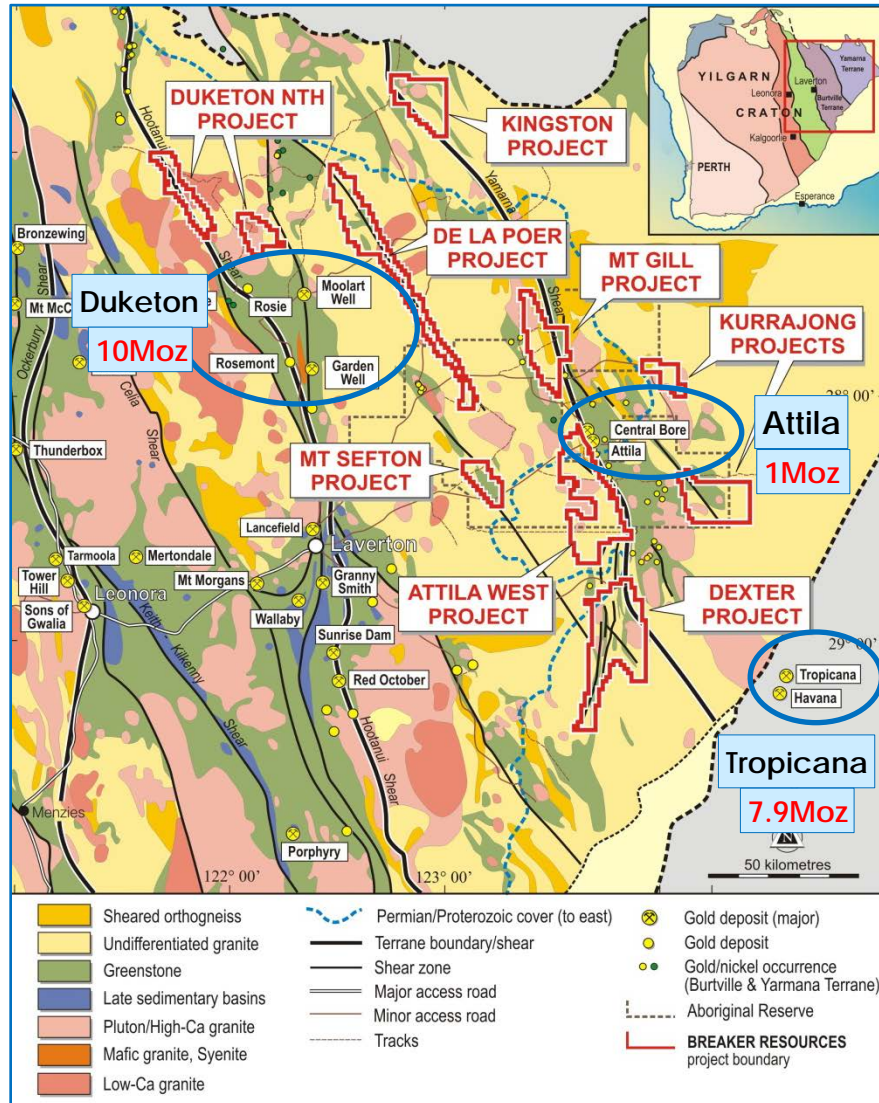


Manager Corporate Affairs/Company Secretary

- 18 years administration experience (corporate, mining and exploration)

Project Overview

Eastern Goldfields Superterrane (EGST)



- ✦ The eastern half of the EGST is essentially unexplored outside recent discovery areas...a new search space and discovery hot spot with expanding infrastructure
- ✦ Breaker's projects are on selected structures adjacent to major crustal faults where gold is known to be most abundant
- ✦ *Early results validate our strategic focus and ...the untested gold potential of the EGST*
- ✦ Yamarna Shear (main focus)
 - Dexter Project (large gold system) 8,500m RC drilling in progress
 - Mt Gill Project (multi-km anomalies)
 - Kurrajong South (12km anomaly)
 - Duketon North/De La Poer

Why a New Search Space?

- ✦ **New data (Geological Survey of Western Australia 2005 - 2009)**
 - aeromag, gravity, seismic surveys, mapping, geochronology
 - *new Yamarna Terrane* (same age as Kalgoorlie Terrane, Oct 2010)
 - dating of 3 gold events for the first time
- ✦ **10 Years of Intensive Research (2001-2010)**
 - structural and metamorphic history rewritten
 - new understanding of gold genesis and controls on mineralisation
- ✦ **New tools for exploring transported cover**
 - reliable, low detection, multi-element analytical techniques
- ✦ **Several significant gold discoveries during this time**
 - Moolart Well (2002)
 - Tropicana (2005)
 - Central Bore and Garden Well (2009)

...prior opportunity to find the 10% of gold deposits containing two-thirds of the province-scale gold

Understanding the search space concept

- In any search space, the bulk of the metal is in a few large deposits
- The largest deposits in any search space are usually found early because they generally have the most obvious signatures
- Any given search space will progressively become exhausted over time, resulting in smaller and higher cost discoveries
- The most important discontinuities in the exploration business are those which significantly expand the search space through innovation
 - New technology (extraction and exploration)
 - New concepts (often linked to technology)



Fennoscandian Exploration and Mining 2009

Exploration Targeting in a Business Context

T. Campbell McCuaig – CET
Pietro Guj – CET
Jon Hronsky – Western Mining Services
Richard Schodde – MinEx Consulting



SEARCH SPACE OBSERVATION 1 : Most of the mineral industry's wealth is captured by a handful of giant deposits

Cumulative NPV @ 8% discount rate

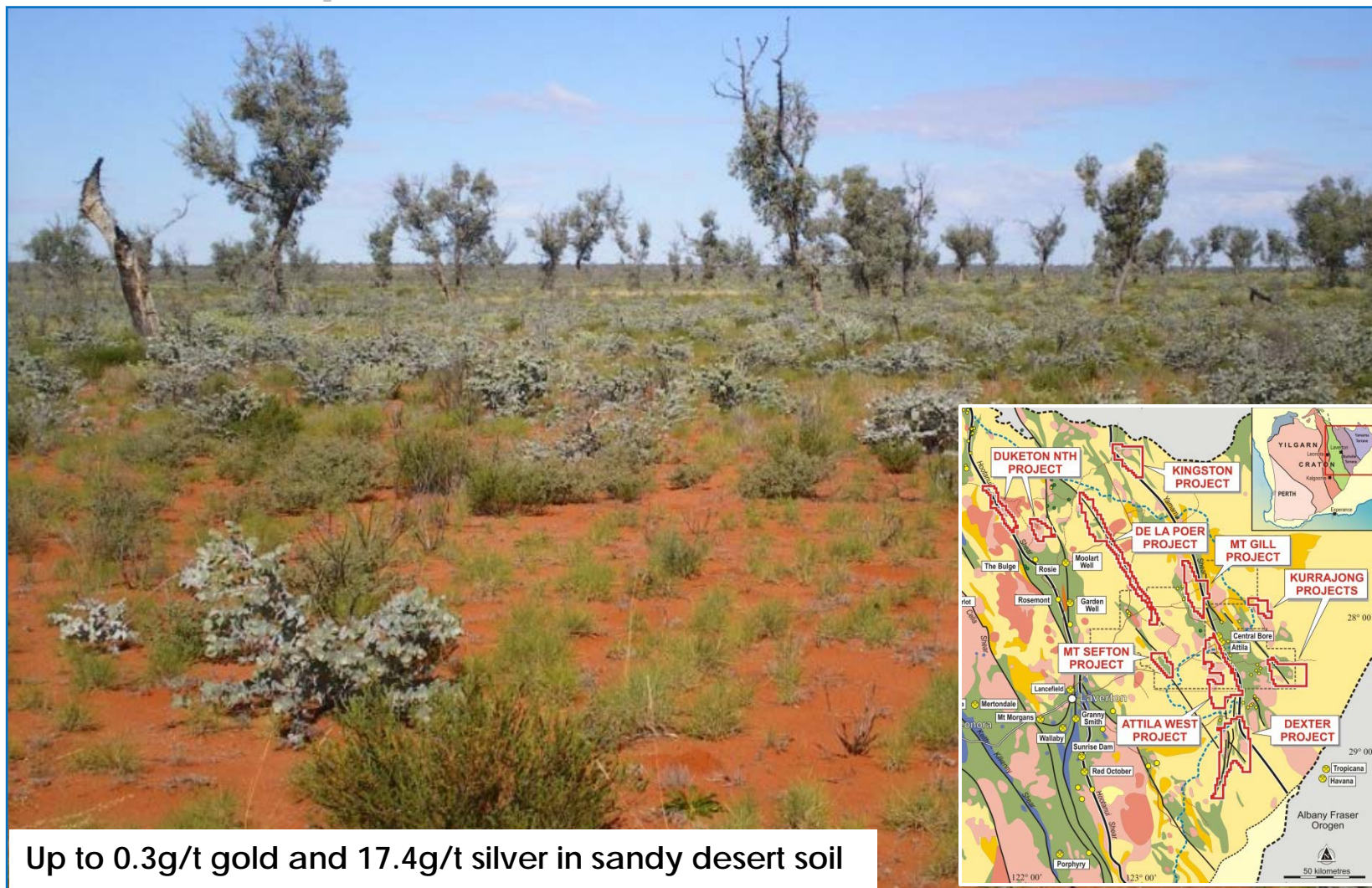


Base Metal Mines discovered in Canada & Australia to 1988

Hronsky (2004)

Source : Derived from Mackenzie 1995

Dexter Gold Project

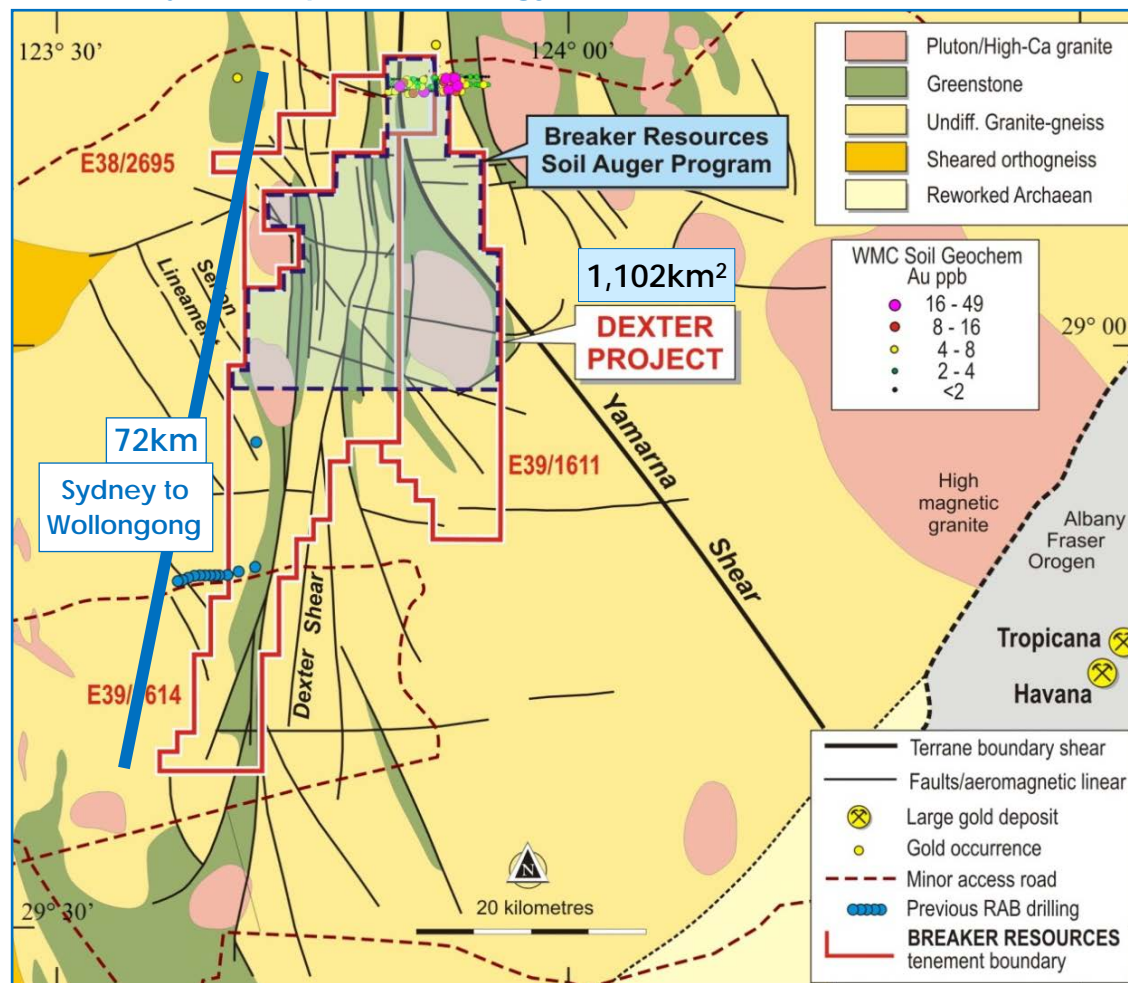


Up to 0.3g/t gold and 17.4g/t silver in sandy desert soil

- ✦ Source of the gold below cover – sand (1m-3m), Permian sediment (25m-75m)

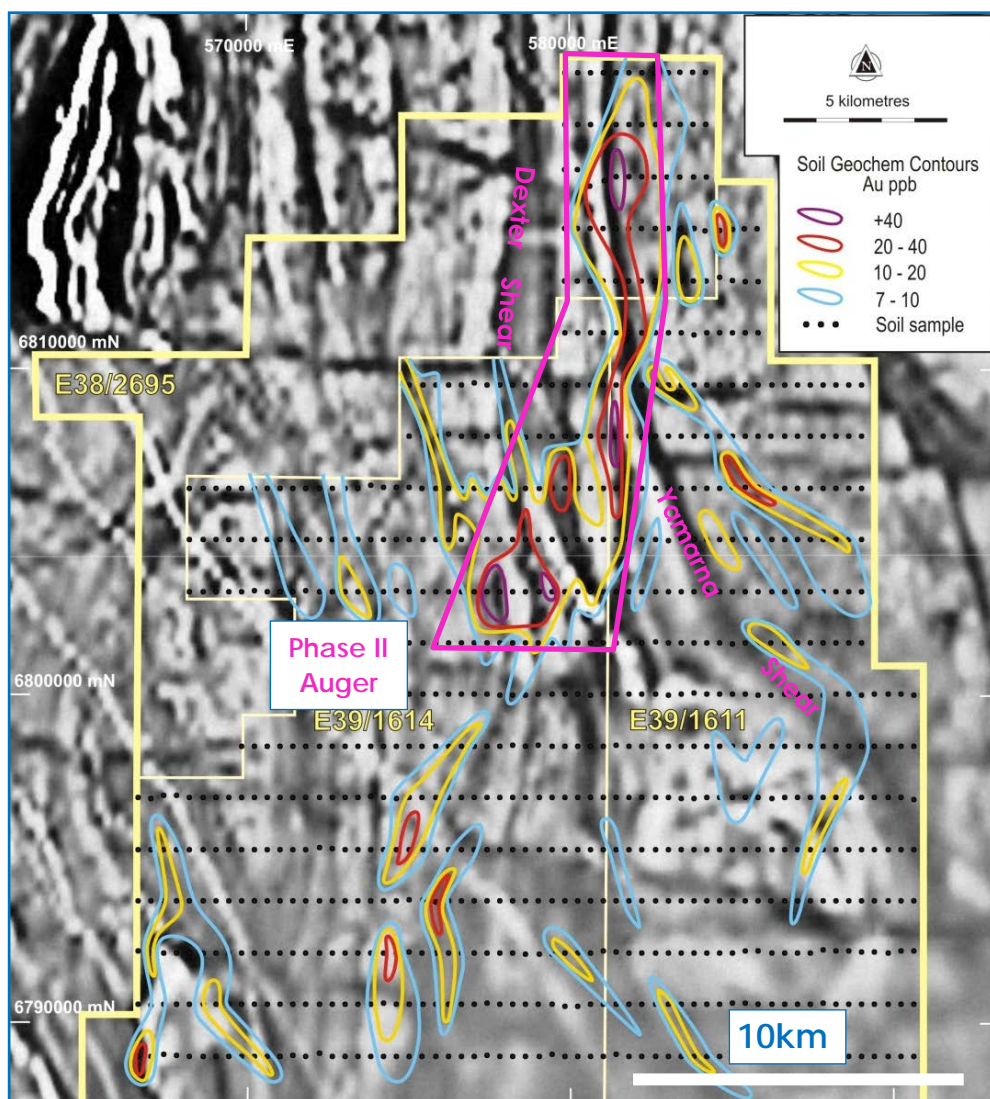
Dexter Gold Project

Dexter Project Interpreted Geology



- ✦ 140km SE of Laverton
80km NW of Tropicana
- ✦ A very large project
- ✦ Essentially unexplored
- ✦ Outstanding structural set-up
- ✦ Initial step: 1,600m x 400m
- Phase I auger soils

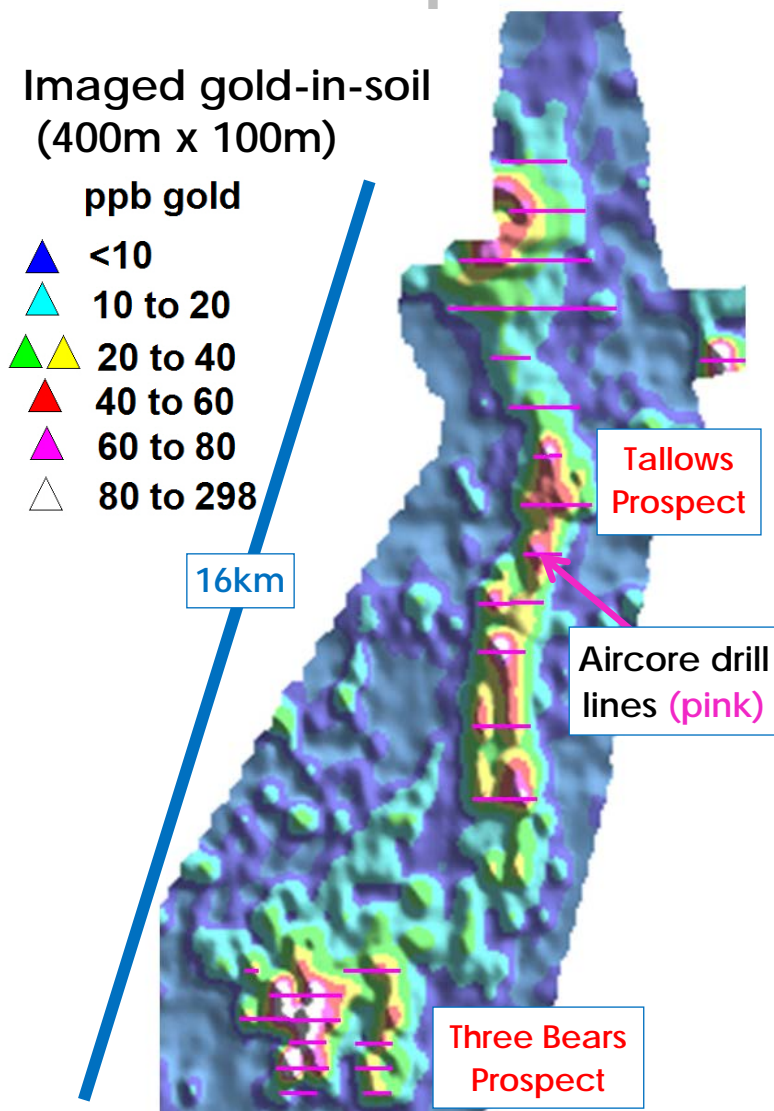
Dexter - Phase I Soil Results



Dexter Project Gold-in-Soil Contours over Aeromagnetic Image

- ✦ 1,600m x 400m pattern soils
- ✦ Unusually large and cohesive gold-in-soil response (despite cover)
- ✦ 32km-long (up to 59ppb gold)
- ✦ Anomalous gold pathfinders (mercury-tellurium-silver)
- ✦ Strong spatial association with stacked fault jogs between Yamarna and Dexter Shears

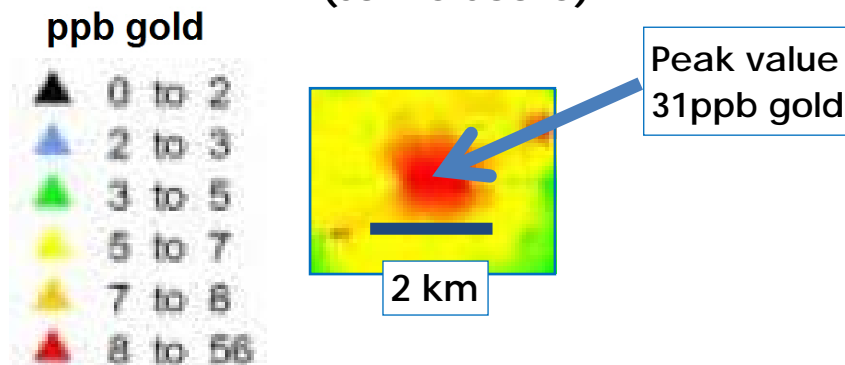
Dexter - Phase II Soil Results



400m x 100m Infill Pattern Infill Soils

- ✦ Up to 298ppb gold (0.3g/t)
17,415ppb silver (17.4g/t)
- ✦ ~10 times larger in size and magnitude than Tropicana-Havana soil anomaly - suggests something unusual below
- ✦ A large area...need to scope the system with aircore drilling ensure that initial RC drill holes are in the best place

Tropicana Soil Anomaly Comparison (same scale)



Aircore and RC Approach

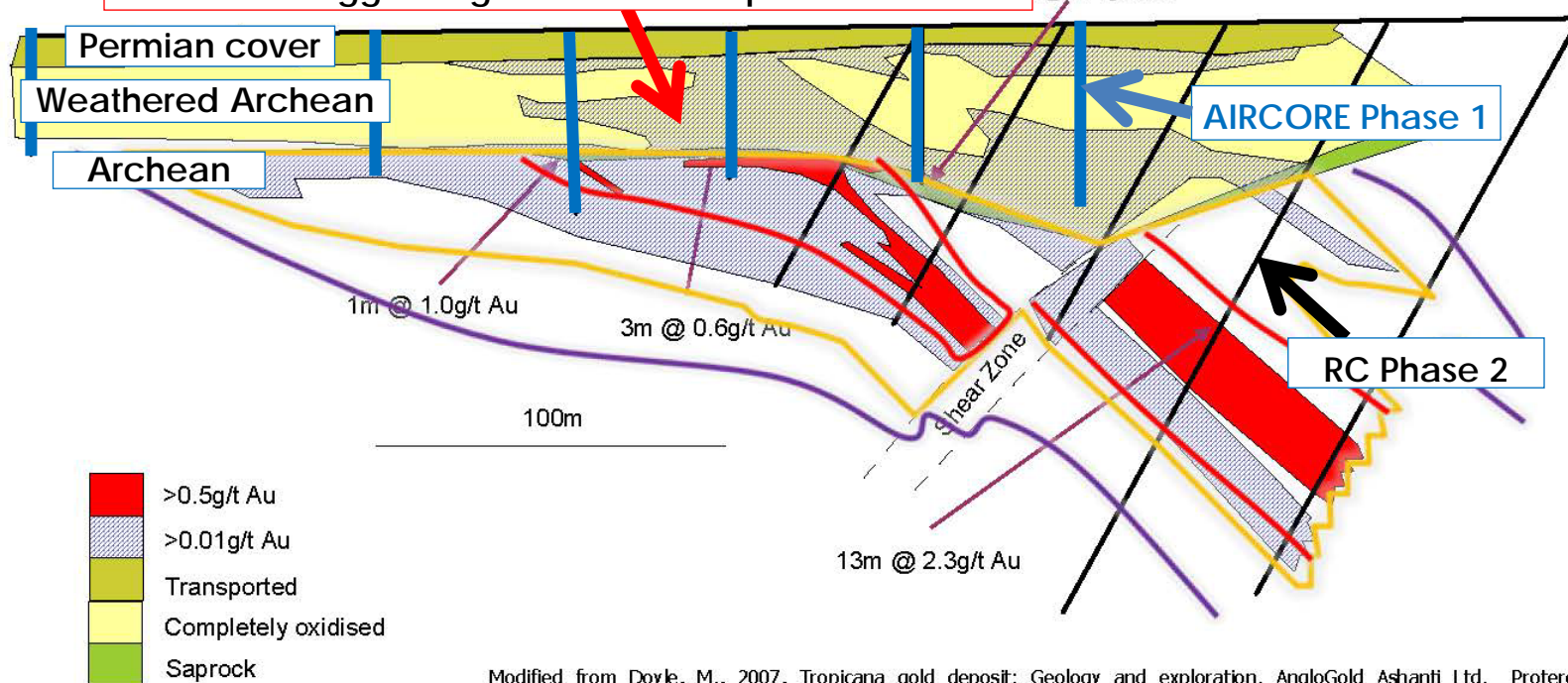
AngloGold-Ashanti Ltd

TROPICANA Schematic Cross - Section

Inferred white mica Al-OH wavelength

- 2190nm (muscovite)
- 2200nm
- 2205nm
- 2205nm (phengite)

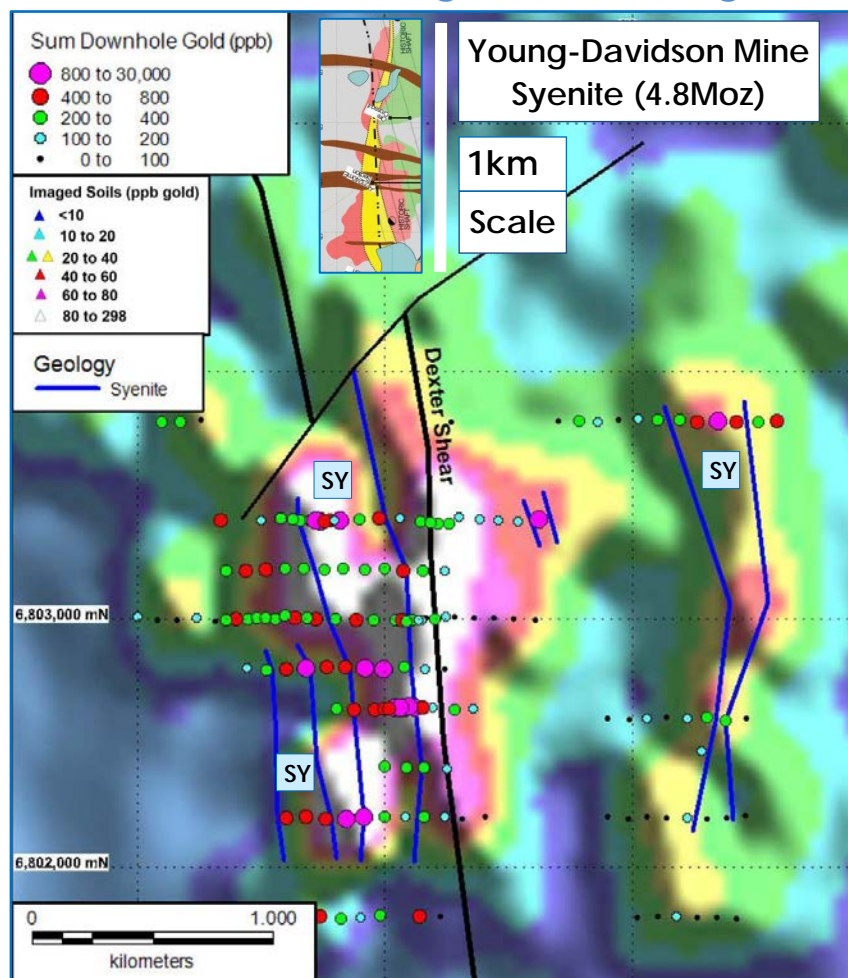
Targeted supergene "smoke" above the gold deposit
...a much bigger target than the ore positions below



Modified from Doyle, M., 2007, Tropicana gold deposit: Geology and exploration. AngloGold Ashanti Ltd. Proterozoic mineralisation in Western Australia conference. Australian Institute of Geoscientists Western Australian Branch unpublished abstract

- ✦ Dexter drill approach: similar to first pass Tropicana drilling

Total downhole gold (ppb) in aircore drilling over 400m x 100m gold-in-soil image

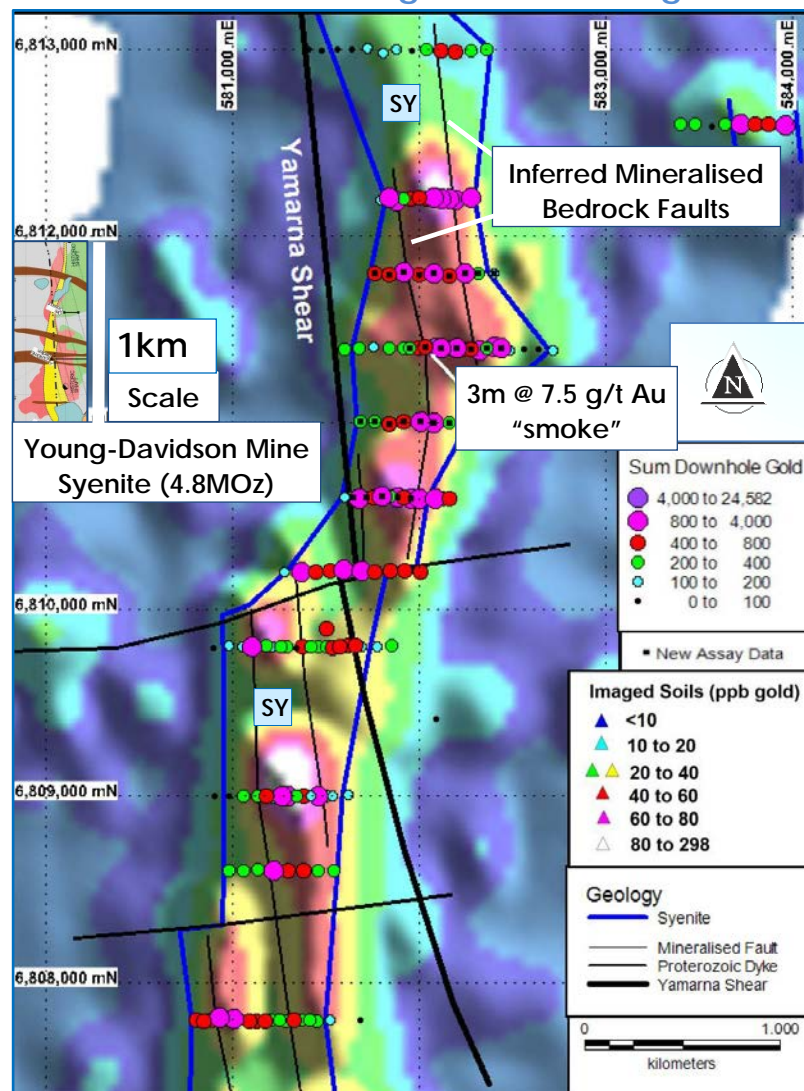


- ✦ ~23,000m aircore drilling completed to scope the system in prep for RC drilling (200m-400m line spacing; 40m hole spacing)
- ✦ Three 2-3km-long zones of gold enrichment in transported cover over altered syenite ("smoke" from inferred bedrock source)
- ✦ Bedrock mineralisation confirmed in fresh altered syenite up to 1g/t gold (drill penetration <1m, RC drilling in progress)



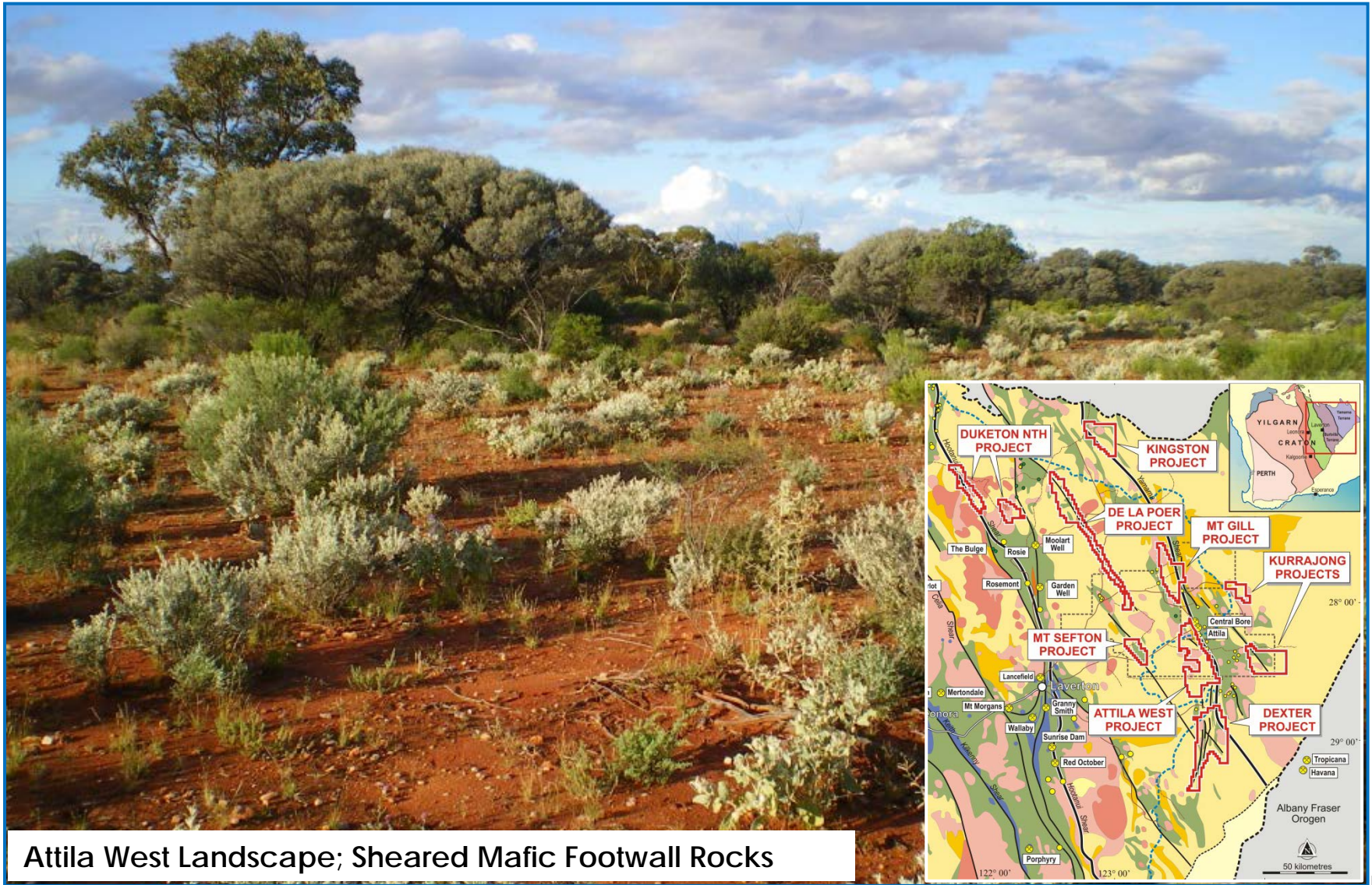
Bottom-of-hole syenite ~1g/t gold (mantle connection confirmed) ✓

Total downhole gold (ppb) in aircore drilling
on 400m x 100m gold-in-soil image



- ✦ Drill holes on 400m-1,200m line spacing; 40m-80m hole spacing (very wide-spaced)
- ✦ Multi-km zones of secondary gold enrichment "smoke" in transported cover (to 3m @ 7.5g/t gold)
- ✦ Higher grade zones of secondary gold enrichment define multiple stacked bedrock fault positions
- ✦ Bedrock faults in altered syenite anomalous in gold and have similar pathfinder elements to Young-Davidson gold mine, Canada (drill penetration of fresh bedrock <1m)
- ✦ RC drilling currently in progress (with \$150K support from WA government EIS scheme)

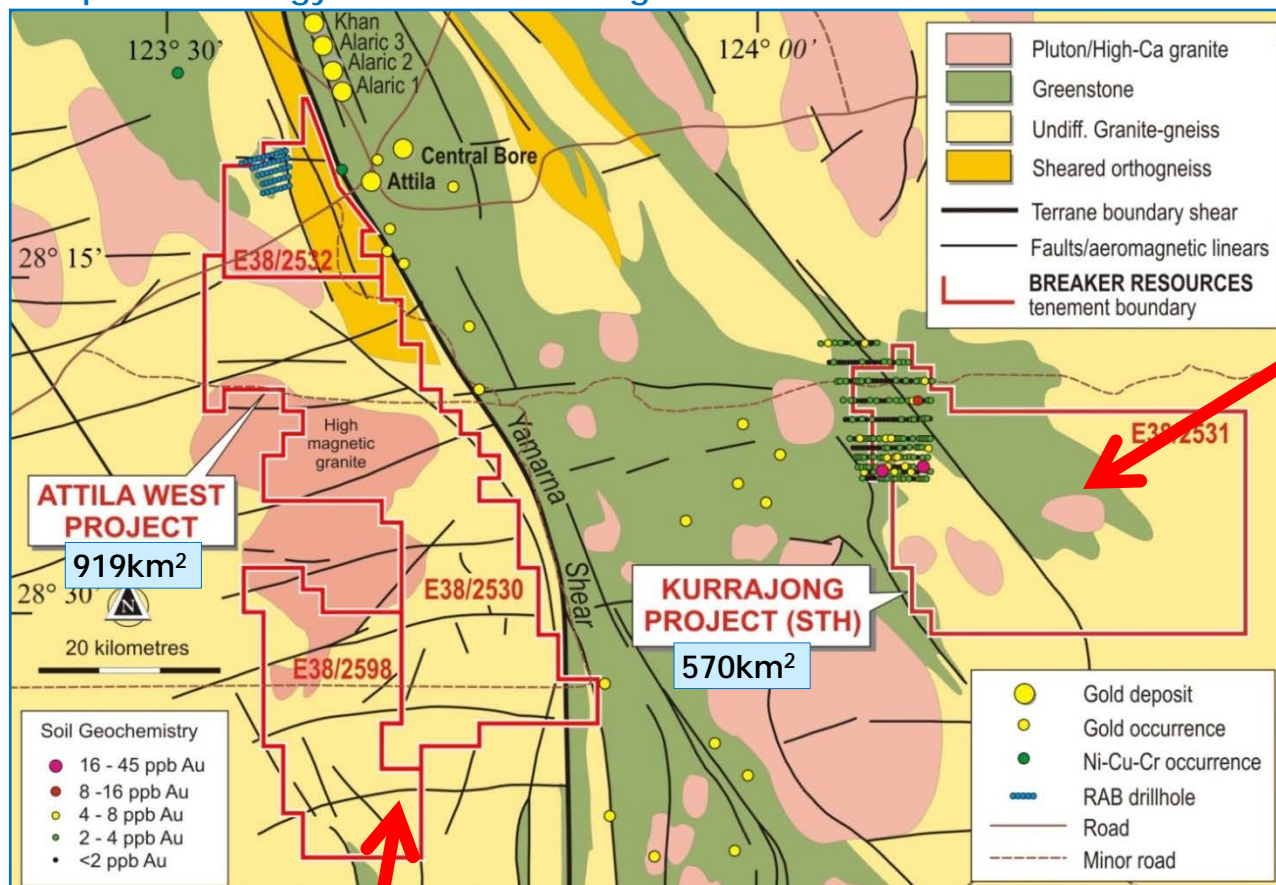
Kurrajong South/Attila West Projects



Attila West Landscape; Sheared Mafic Footwall Rocks

Kurrajong South/Attila West Projects

Interpreted Geology with Previous Drilling & Gold-in-Soil Anomalies



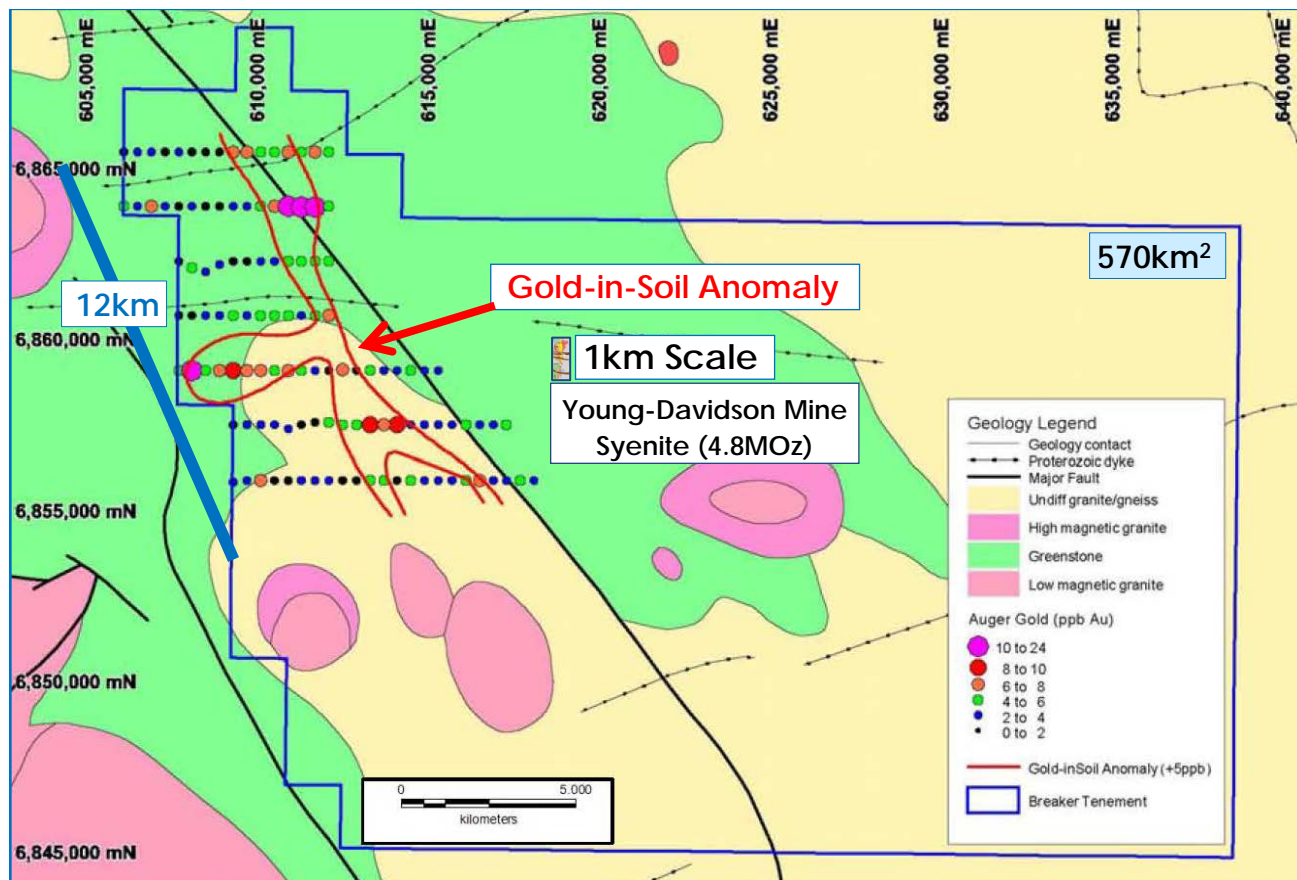
Kurrajong South Project

- ✦ Historical soil anomaly
 - 45ppb gold (WMC)
 - no previous drilling
 - good structural setup
- ✦ Auger drilling completed
 - 12km gold-in-soil anomaly defined

Attila West Project

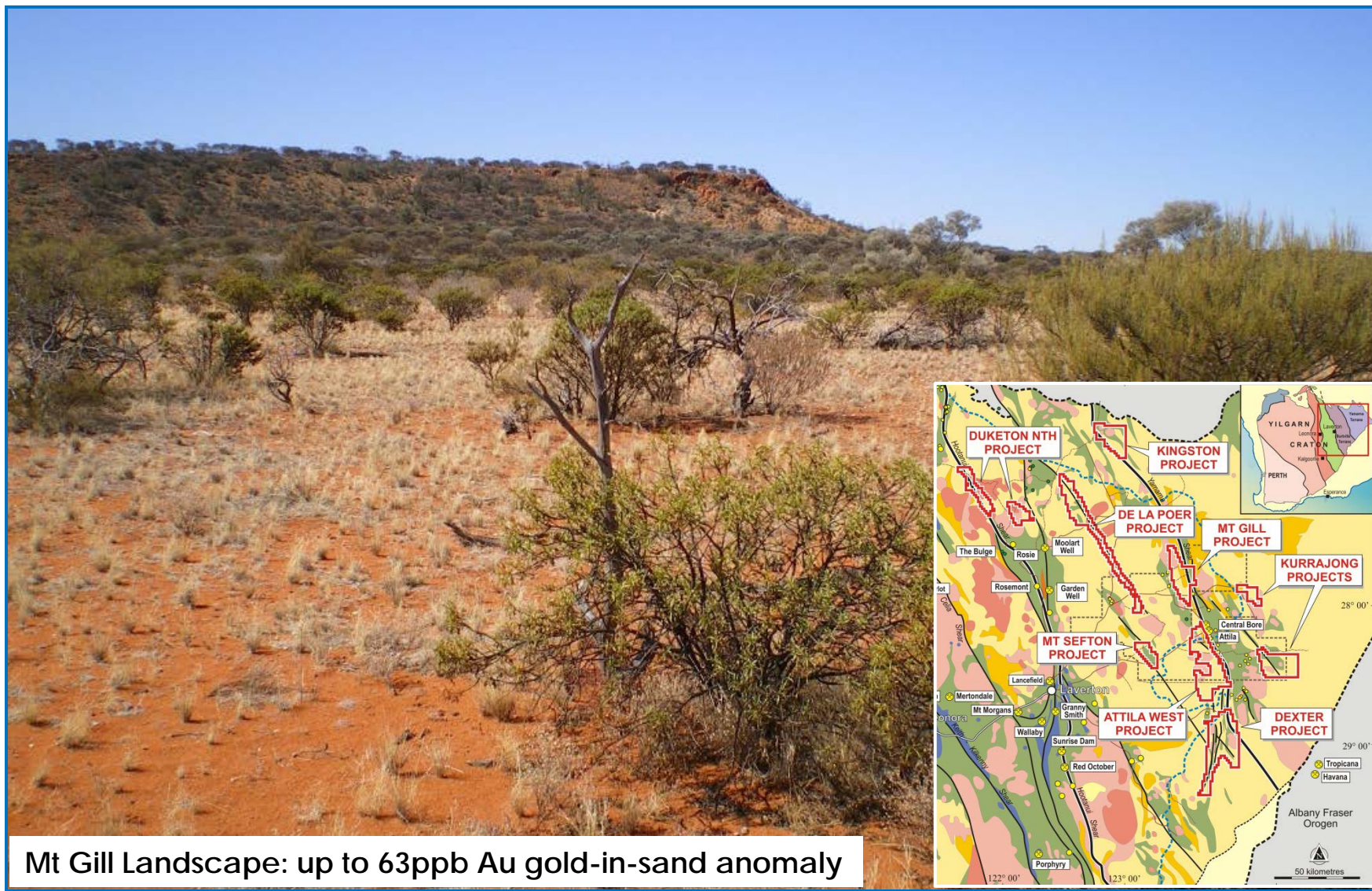
- ✦ Large area adjacent to Yamarna Shear and 1Moz Attila deposit (60km strike)
- ✦ Compelling structural targets/essentially unexplored
- ✦ Auger drilling completed, results under assessment

1600m x 400m Soils over Interpreted Geology



- ✦ Large coherent gold-in-soil anomaly correlates with geology in area of transported cover
- ✦ Peak value of 24ppb gold, 1,574ppb silver with elevated mercury, molybdenum and copper
- ✦ Follow-up infill soils (~June 2013) with aircore drilling planned in Sept/Oct 2013

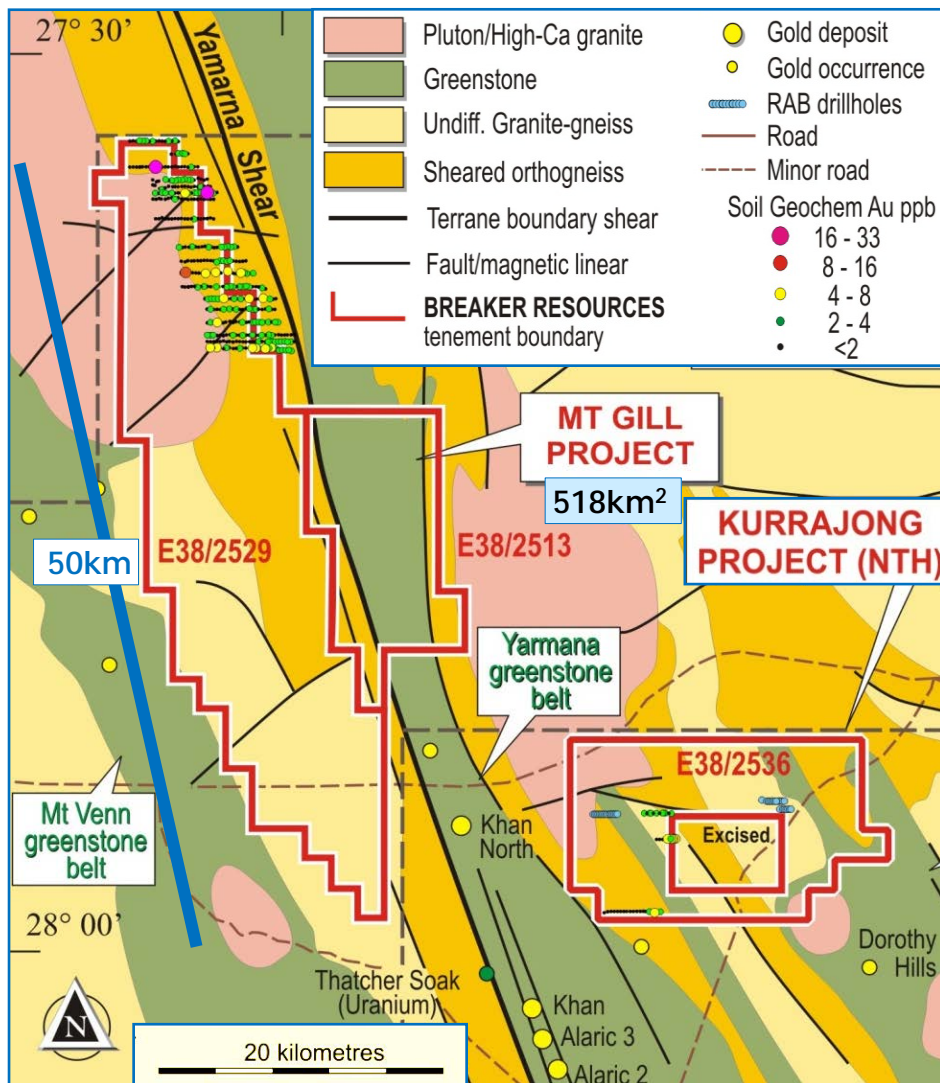
Mt Gill Project



Mt Gill Landscape: up to 63ppb Au gold-in-sand anomaly

Mt Gill Project

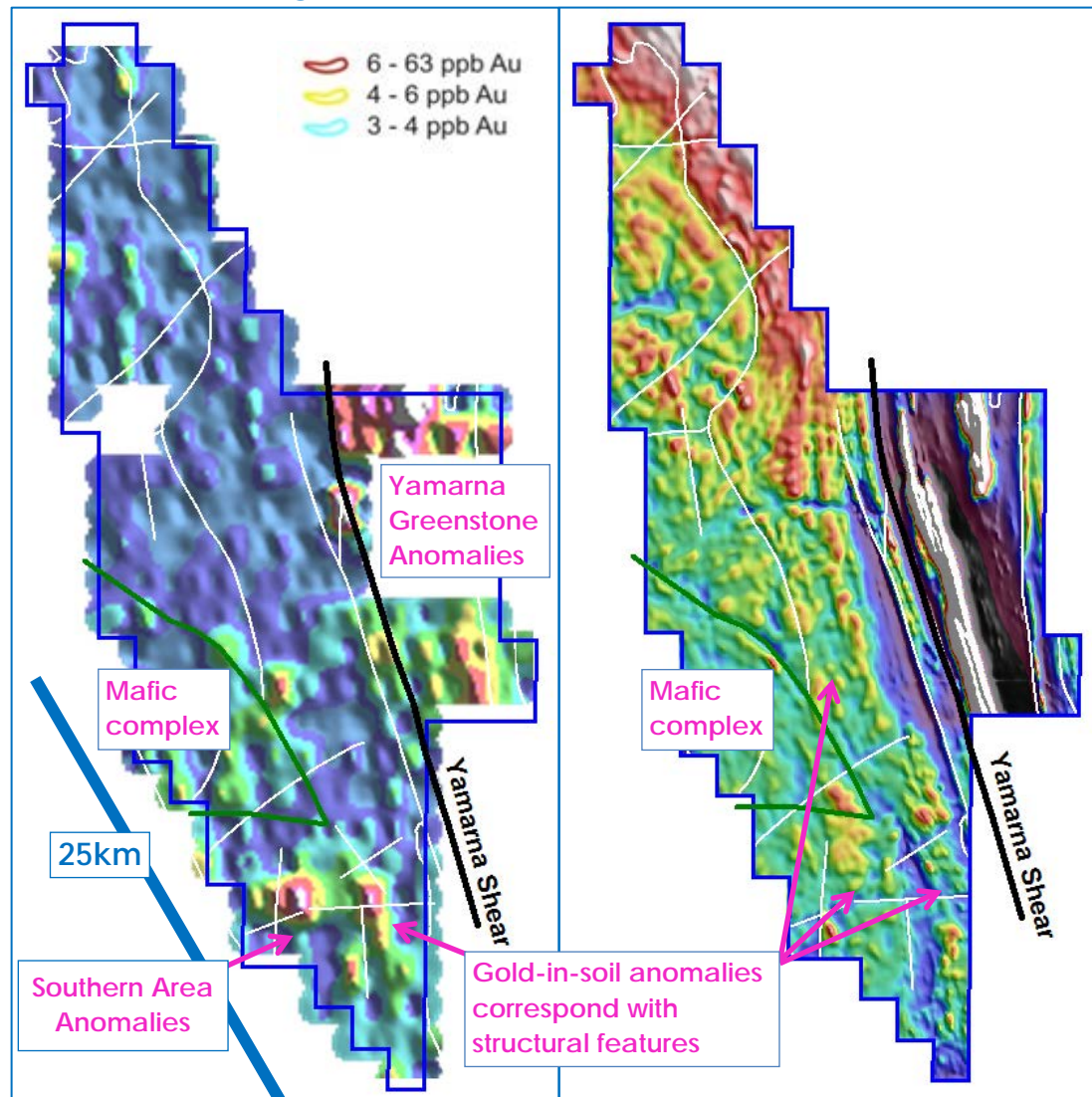
Mt Gill & Kurrajong North Projects Interpreted Geology



- ✦ Located 30km NW of 1Moz Attila-Alaric deposits
- ✦ 50km of Yamarna Shear
- ✦ No previous drilling
<10% historical geochem coverage
- ✦ Thin sand cover (1-3m generally) over Archean basement
- ✦ Reconnaissance auger sampling completed (1,600m x 400m)

Mt Gill - Phase I Auger Results

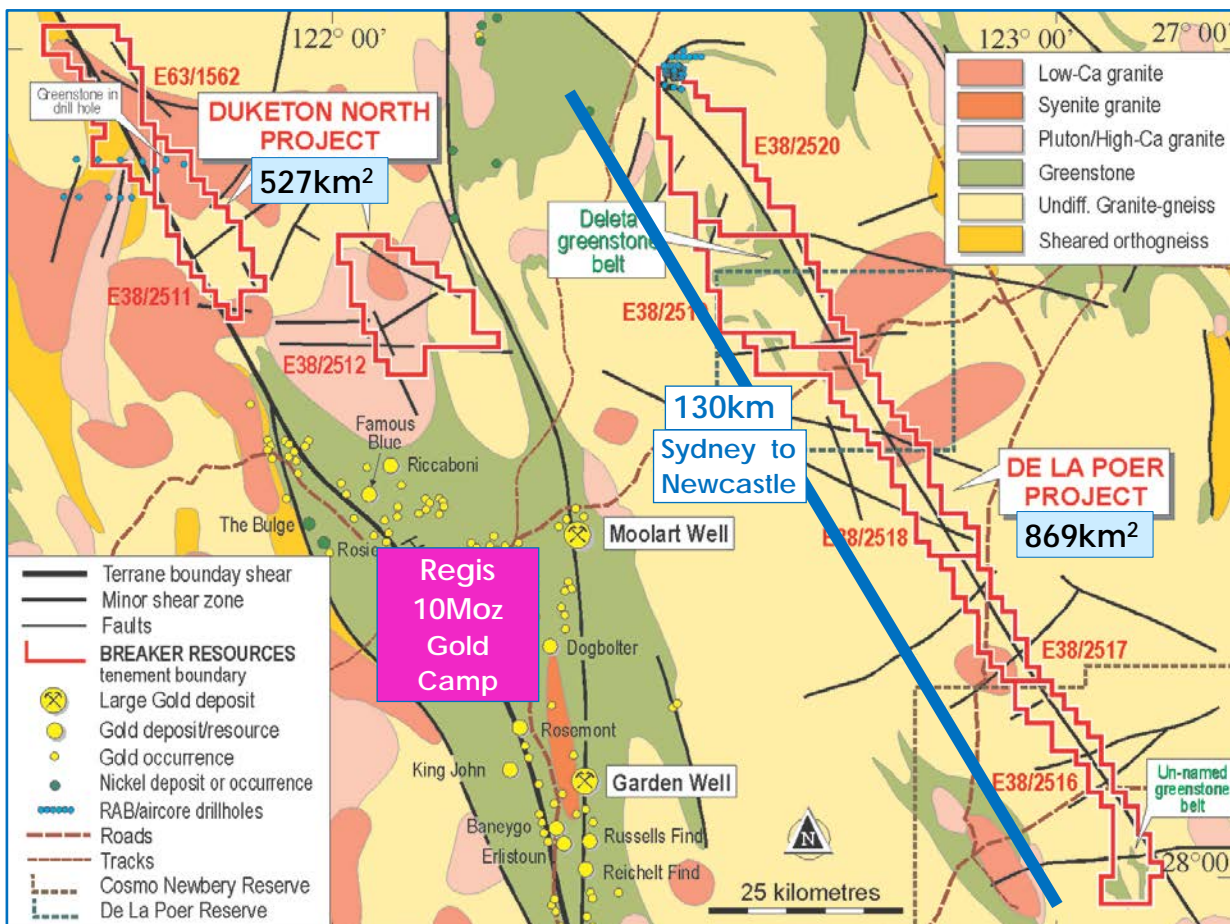
Gold-in-Soil Image
1,600m x 400m auger results



- ✦ Multiple gold-in-soil anomalies over *large* areas
 - Gold up to 63ppb
 - Silver up to 5,729ppb (5.7g/t)
- ✦ Anomalies to west of Yamarna Shear correspond with structural targets and magnetic low (sand)
- ✦ Anomalies to east of Yamarna Shear in Yamarna Greenstone belt (mixed residual soil/sand)
- ✦ Infill soil sampling planned June 2013; aircore drilling Sept/Oct 2013

Duketon North/De La Poer Projects

Interpreted Geology



Duketon North Project

- ✦ Large area along strike from 10Moz Regis gold camp (43km strike)
- ✦ Known greenstone; no previous geochem
- ✦ Phase I auger drilling completed (multiple gold anomalies)

De La Poer Project

- ✦ New greenstone belt and regional shear identified in 1999
- ✦ Essentially unexplored
- ✦ Phase I auger drilling completed (multiple gold anomalies)

Investment Summary

- ✦ Breaker has identified a LARGE new greenfields gold system at its Dexter Project...upon RC drill confirmation of economic grades, a rapid re-rating of the Company is likely
- ✦ 8,500m RC drilling is in progress with results expected in mid-July 2013
- ✦ Significant (+10 km) gold-in-soil anomalies at the previously undrilled Kurrajong South and Mt Gill Projects are highly prospective with follow-up in June 2013
- ✦ Breaker is building an innovative gold business based on strong results; the exploration budget of ~A\$3M for 2013 will be revised upwards upon discovery
- ✦ Breaker's market cap of ~A\$19M equates to A\$3,500/km²...value with vast upside potential in our view





THANK YOU

