



**BREAKER**  
Resources NL

**ON THE CUSP OF GOLD DISCOVERY  
IN WA'S EASTERN GOLDFIELDS**



**Lake Roe Gold Project**

**ASX Code: BRB**  
[www.breakerresources.com.au](http://www.breakerresources.com.au)

# Cautionary Statements

**Nature of this document:** The purpose of this presentation is to provide general information about Breaker Resources NL (the “Company”). Unless otherwise stated herein, the information in this presentation is based on the Company’s own information and estimates.

**Not an offer:** This presentation is for information purposes only and does not constitute or form any part of any offer or invitation to sell or issue, or any solicitation of any offer to purchase or subscribe for, any securities in the Company in any jurisdiction. This presentation and its contents must not be distributed, transmitted or viewed by any person in any jurisdiction where the distribution, transmission or viewing of this document would be unlawful under the securities or other laws of that or any other jurisdiction.

**Not financial product advice:** This presentation does not take into account the individual investment objectives, financial situation and particular needs of each of the Company’s shareholders. You may wish to seek independent financial and taxation advice before making any decision in respect of this presentation. Neither the Company nor any of its related bodies corporate is licensed to provide financial product advice in respect of the Company’s securities or any other financial products.

**Forward-looking statements:** Certain statements in the presentation are or may be “forward-looking statements” and represent the Company’s intentions, projections, expectations or beliefs concerning, among other things, future operating and exploration results or the Company’s future performance. These forward looking statements speak, and the presentation generally speaks, only at the date hereof. The projections, estimates and beliefs contained in such forward looking statements necessarily involve known and unknown risks and uncertainties and are necessarily based on assumptions, which may cause the Company’s actual performance and results in future periods to differ materially from any express or implied estimates or projections. It is recognised that it is common practice for a company to comment on and discuss its exploration in terms of target size and type. The information in this presentation relating to exploration targets should not be misunderstood or misconstrued as an estimate of Mineral Resources or Ore Reserves. The potential quantity and grade for targets is conceptual in nature since there has been insufficient work completed to define them beyond exploration targets and it is uncertain if further exploration will result in the determination of a Mineral Resource.

**Disclaimer:** No representation or warranty, express or implied, is made by the Company that the material contained in this presentation will be achieved or prove to be correct. Except for statutory liability which cannot be excluded, each of the Company, its directors, officers, employees, advisers and agents expressly disclaims any responsibility for the accuracy, fairness, sufficiency or completeness of the material contained in this presentation, or any opinions or beliefs contained in this document, and excludes all liability whatsoever (including in negligence) for any loss or damage which may be suffered by any person as a consequence of any information in this presentation or any error or omission there from. The Company is under no obligation to update or keep current the information contained in this presentation or to correct any inaccuracy or omission which may become apparent, or to furnish any person with any further information. Any opinions expressed in the presentation are subject to change without notice.

## A Perth-based explorer targeting large new gold systems in under-explored parts of WA's Eastern Goldfields

- ✦ Tight capital structure
  - 68.9M fully paid shares
  - 6.9M partly paid shares
  - 8.0M unlisted options
- ✦ Top 20 shareholders hold ~84%
  - Directors: 26%
  - Strong fund support: 32%  
(Geologic, CQS, Gold3000, Nestor)
- ✦ Cash: \$1.24 million (30/06/2015)
- ✦ Market capitalisation @ \$0.05/share:  
~\$3.8 million (21/09/2015)



Aircore Drilling, Lake Roe Project

- ✓ New gold system identified at Lake Roe Project (26 August 2015)
- ✓ 4km soil target identified on possible extension of Moolart Well (31 July 2015)

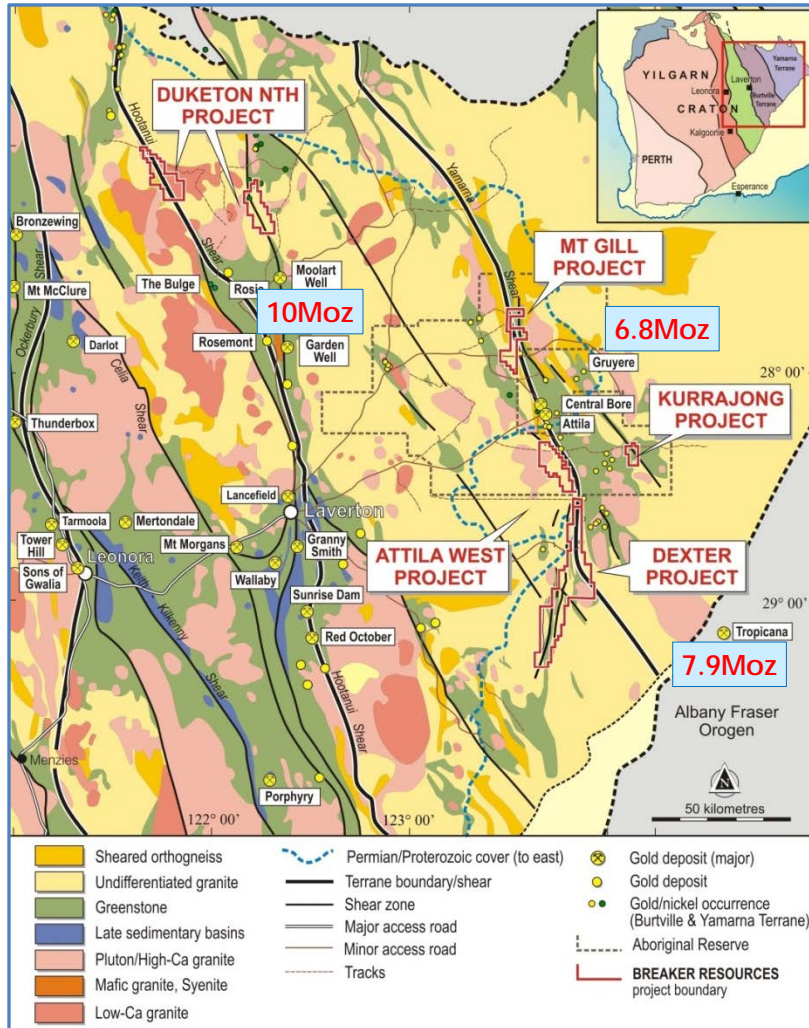
*Experienced mining  
industry professionals  
focused on  
shareholder value*



L-R: Michelle Simson, Mark Edwards, Tom Sanders, Mike Kitney

- ✦ **Executive Chairman: Tom Sanders**  
Geologist with +35 years' experience in exploration, mining and corporate management
- ✦ **Non-Executive Director: Mark Edwards**  
Lawyer with +30 years' experience in resources and corporate law
- ✦ **Non-Executive Director: Mike Kitney**  
Process engineer with +40 years' experience nationally and overseas
- ✦ **Company Secretary: Michelle Simson**  
+20 years' experience in administration and corporate affairs
- ✦ **Exploration Manager: Alastair Barker**  
Geologist with +20 years' experience in exploration and mining

## IPO Projects (NE Eastern Goldfields Superterrane)



### ✦ Business strategy

Modern multi-element geochemistry to target new gold systems under cover in under-explored parts of a high endowment gold province (big systems, big signatures)

### ✦ Early focus on large soil anomalies generated on several IPO projects (eg. Dexter Project)

### ✦ Needed to “re-stack the odds” for discovery by focusing on good areas with thinner cover

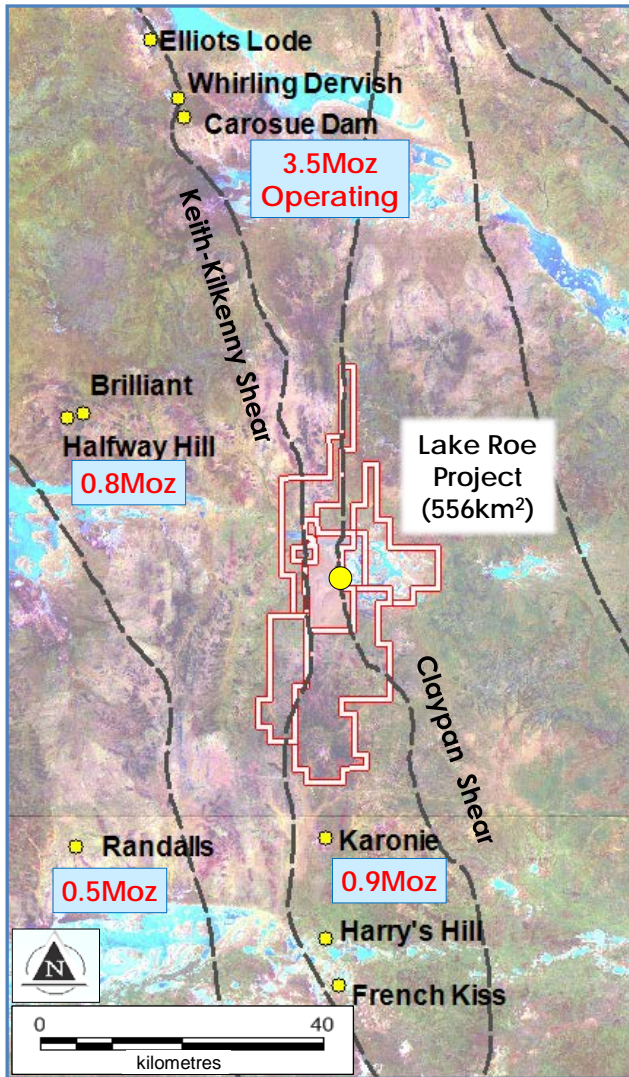
### ✦ This decision has met with early success (Lake Roe & Duketon North Gold Projects, July/August 2015)

### ✦ Recent WA gold discoveries

Tropicana	2005
Garden Well	2009
Gruyere	2014
Lake Roe?	2015?

# Lake Roe Gold Project

## Lake Roe Gold Project Location



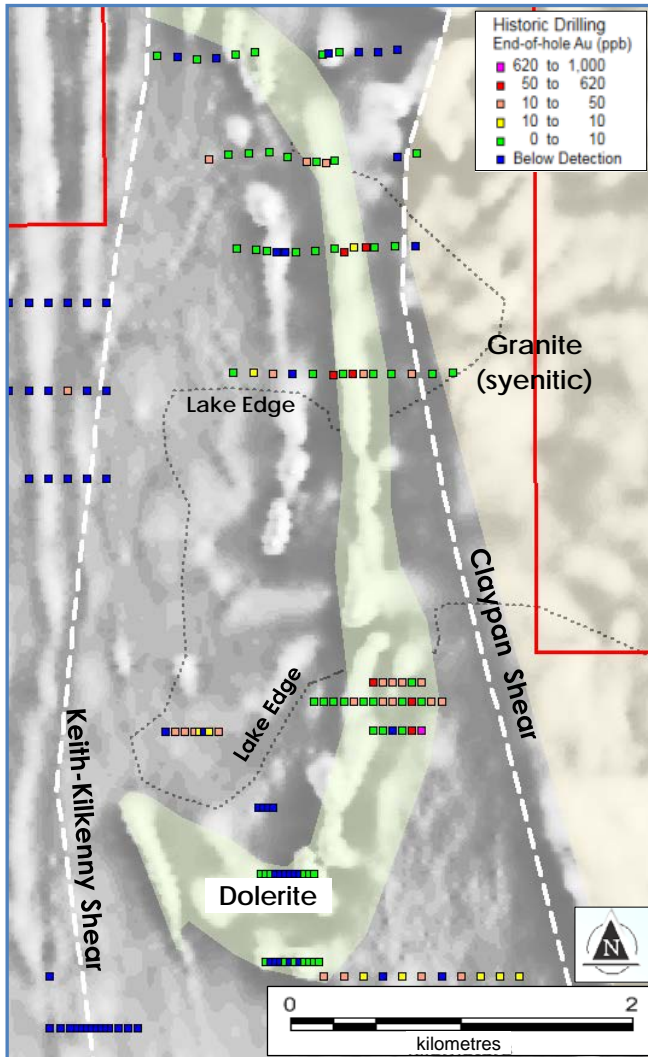
- ✦ Located 100km east of Kalgoorlie
- ✦ Acquired by pegging starting late 2014 (556km<sup>2</sup>)
- ✦ Exceptional structural setting  
...between two major shear zones  
(anticline, syenite granite, dolerite host)
- ✦ Along strike from major gold deposits  
(near operating gold plant)
- ✦ No native title claim on granted tenement
- ✦ Low level historical exploration, good access



Lake Roe Landscape

# Lake Roe - Historical

## Lake Roe Historical Drilling

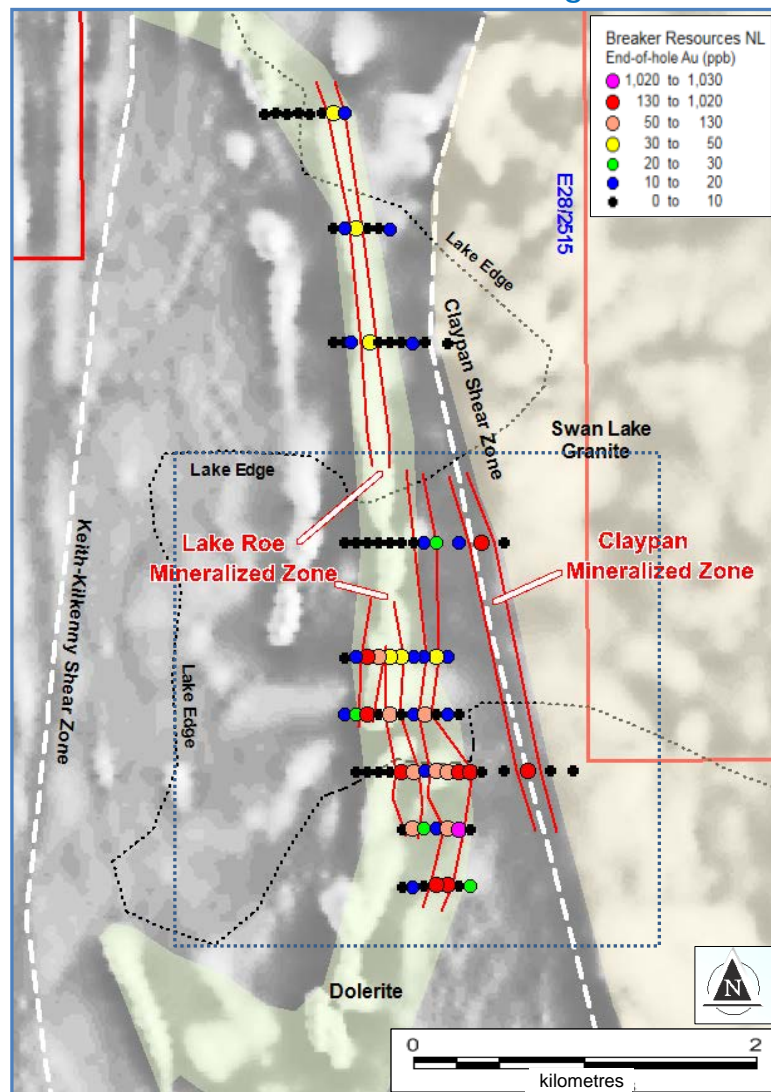


- ✦ Limited historical drilling (WMC, Aberfoyle, PosGold mid-late 1990's)
- ✦ BRB noticed that much of the gold occurs preferentially in a 1km thick fractionated dolerite above the KK Shear, next door to a syenite granite
- ✦ Dolerite is great host rock for gold throughout Eastern Goldfields
- ✦ Historical gold not systematically followed up



Lake Roe Lake Rig (cover ~10m)

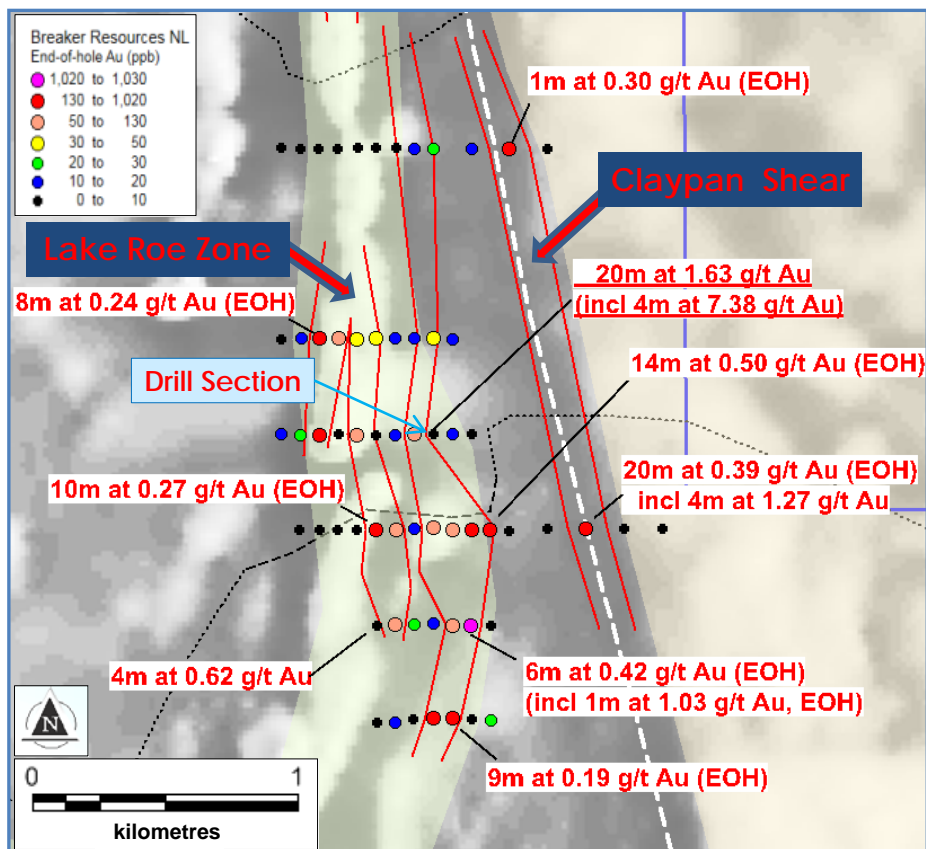
## Lake Roe End-of-hole Gold on Aeromagnetics



- ✦ Breaker drilling mainly targeted the dolerite but two drill lines extended to test Claypan Shear on granite contact (Aug 2015 ~3,200m ave. 37m )
- ✦ A wide-spaced reconnaissance aircore program (80-160m hole spacing, 400-1,600m line spacing)
- ✦ All holes drilled to "refusal" (top of fresh bedrock)...*mainly a test of the soft oxide zone*
- ✦ Multi-element done on 1m end-of-hole (EOH) samples to build a picture of bedrock alteration
- ✦ **Significant oxide gold (up to 4m at 7.38g/t in zone of 20m @ 1.93g/t Au\*) identified in two separate zones up to 5km long...open along strike**
- ✦ 20% of holes ended in cohesive gold, silver and tungsten mineralisation in altered mafic rocks up to 300m wide...this is unusual
- ✦ **The results indicate a large new gold system**

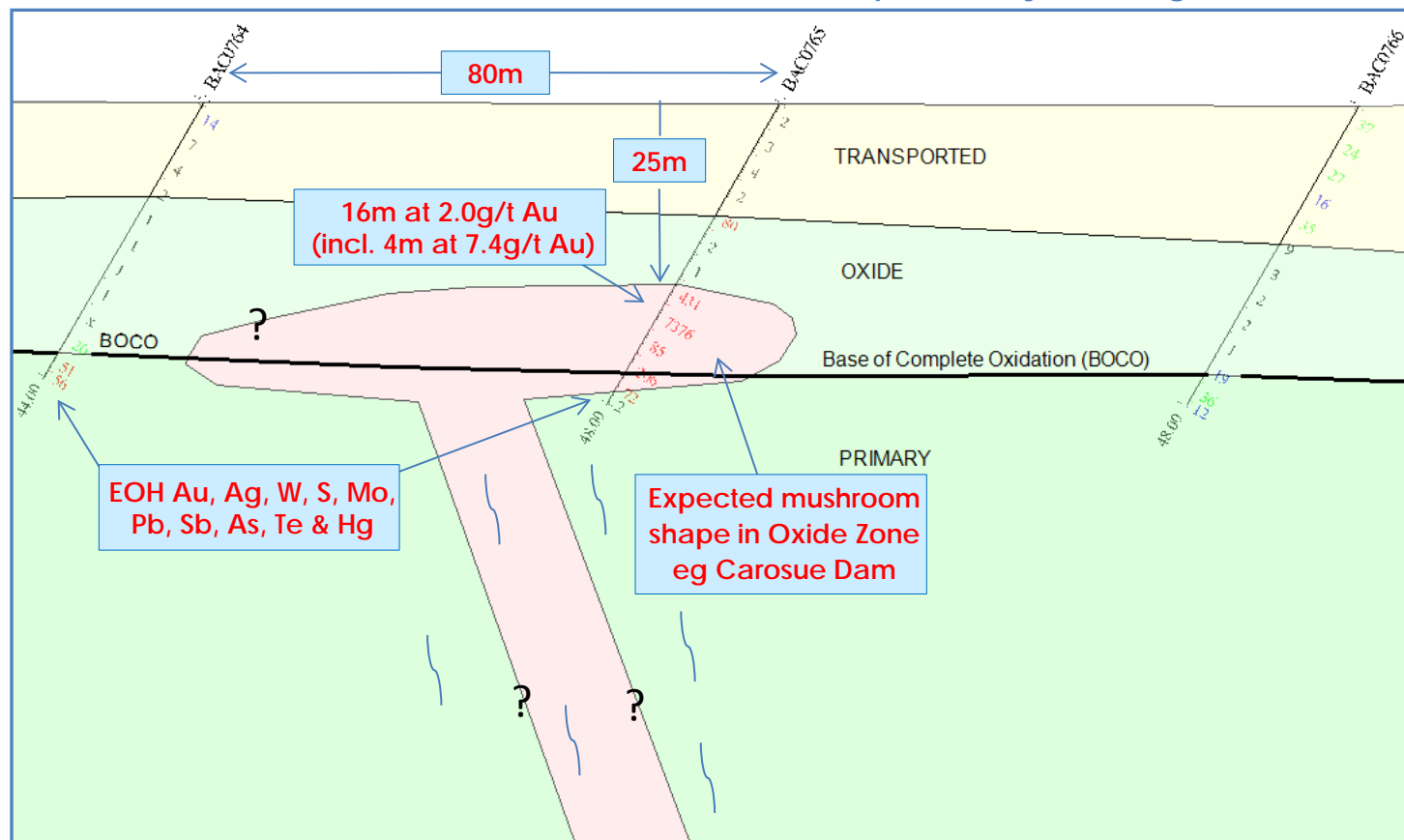
## Southern Area:

### Summary of oxide drill intersection over end-of-hole gold



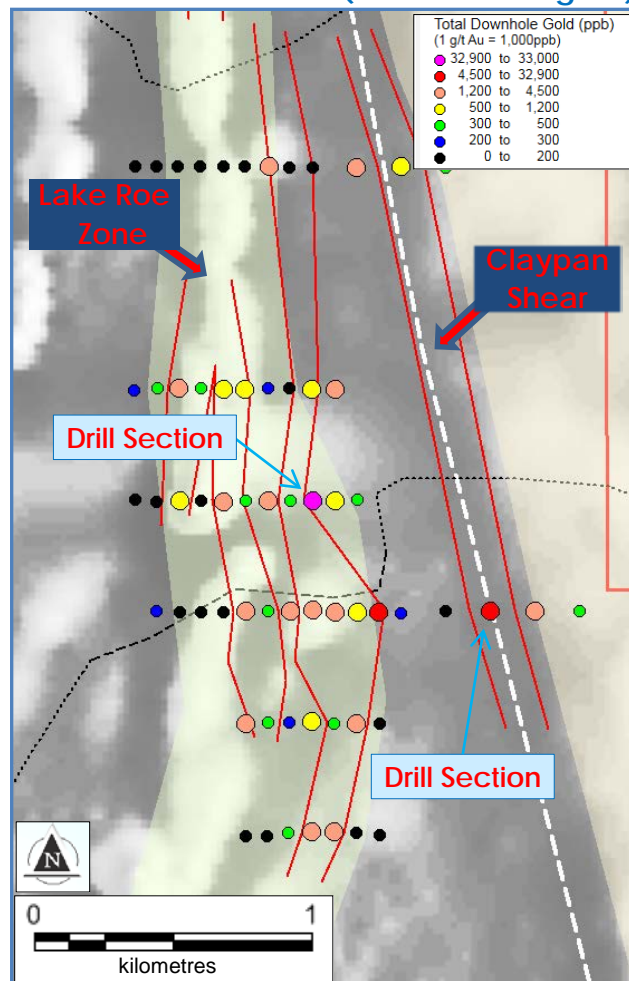
- ✦ Two separate zones of Au, Ag and W up to 300m wide ("mineralisation envelopes")
- ✦ Lake Roe Zone (dolerite-hosted) x 2km  
Best intersection\* 4m at 7.38g/t in zone of 20m @ 1.93g/t Au, 14m at 0.50g/t Au, 4m at 1.16g/t Au (80m drill hole spacing)
- ✦ Claypan Shear Zone (granite contact) x 2.5km  
Best intersection\* 4m at 1.27g/t in zone of 20m at 0.38g/t Au (160m drill hole spacing)
- ✦ Both zones open along strike
- ✦ The scale and hole spacing are deceptive (cross section)

Cross Section 6600200N on Lake Roe Dolerite Zone (preliminary and diagrammatic)

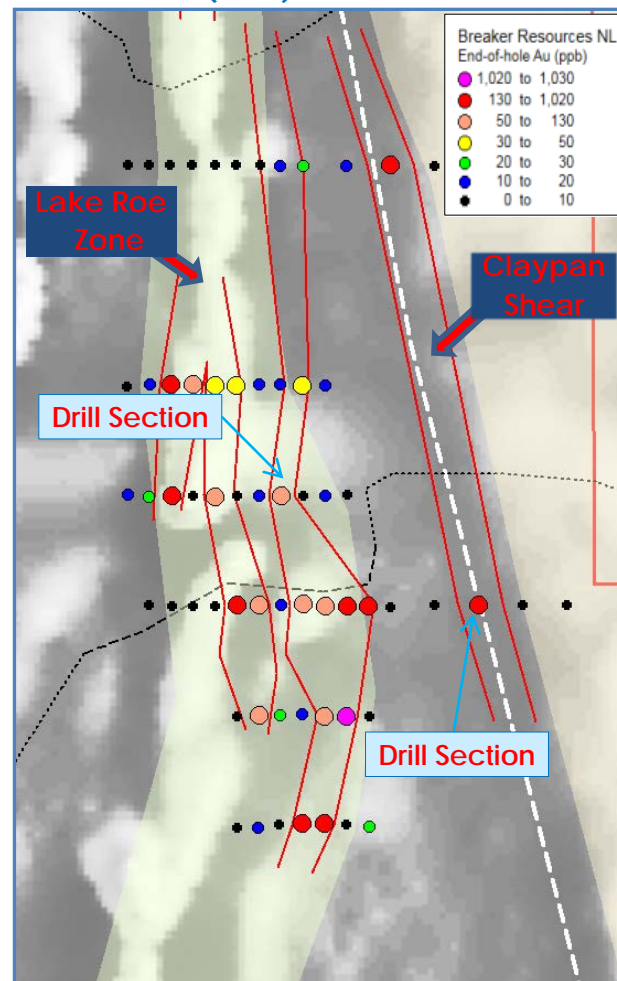


- ✦ Drill hole spacing too wide to define the geometry of the oxide mineralisation (discovery sometimes a function of drill density/establishing continuity)
- ✦ Large tonnage target...shallow with a potential low waste to ore strip ratio

Total Downhole Gold (~ total oxide gold)



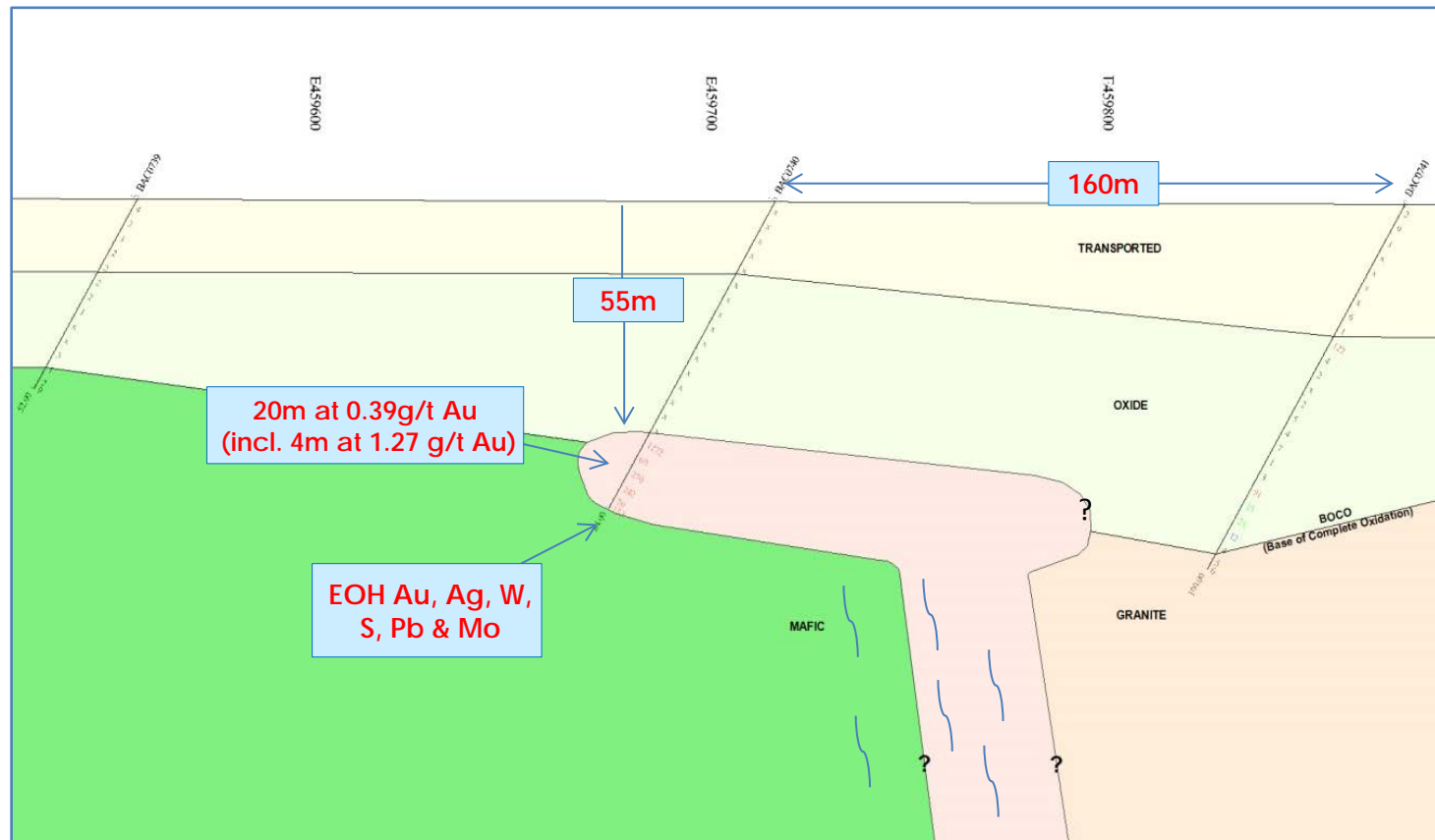
End-of-Hole (EOH) Gold



- ✦ The amount of oxide gold in the drilling correlates spatially with the EOH gold (indicates the oxide gold is mainly oxidised bedrock mineralisation with limited supergene dispersion)

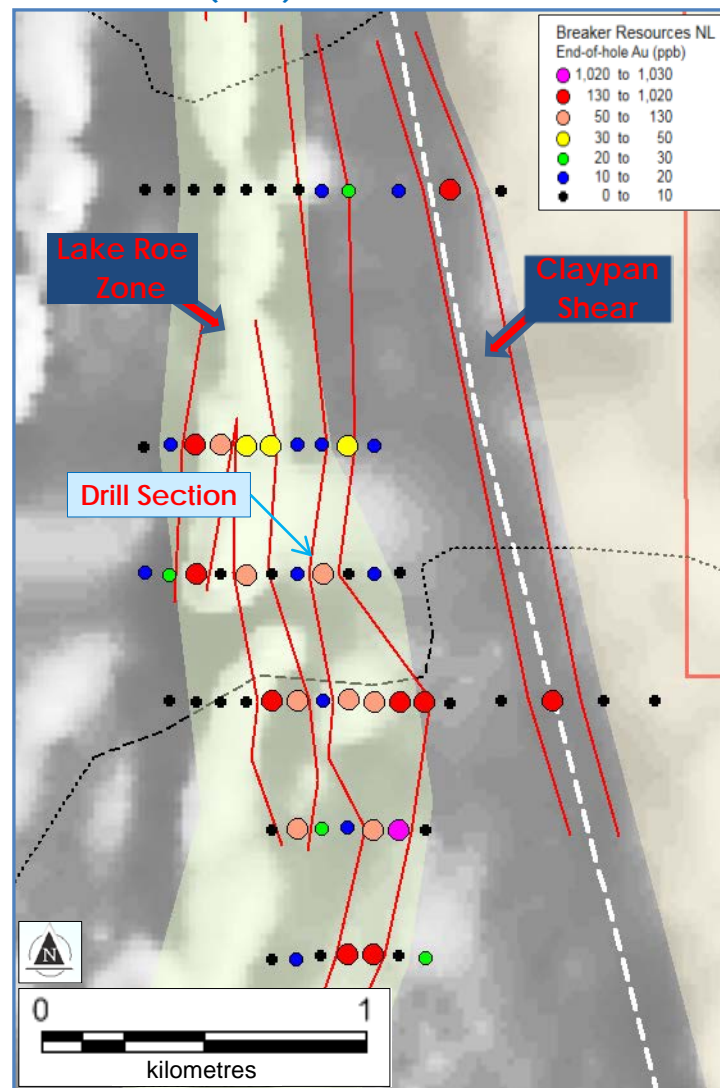
# Lake Roe Cross Section Perspective

Cross Section 6599800N Claypan (granite contact) Gold Zone (preliminary and diagrammatic)



- ✧ Drill hole spacing too wide to define the geometry of the oxide mineralisation
- ✧ Bedrock elevated in gold up to 0.30g/t, silver up to 0.15g/t, tungsten, sulphur, lead and molybdenum

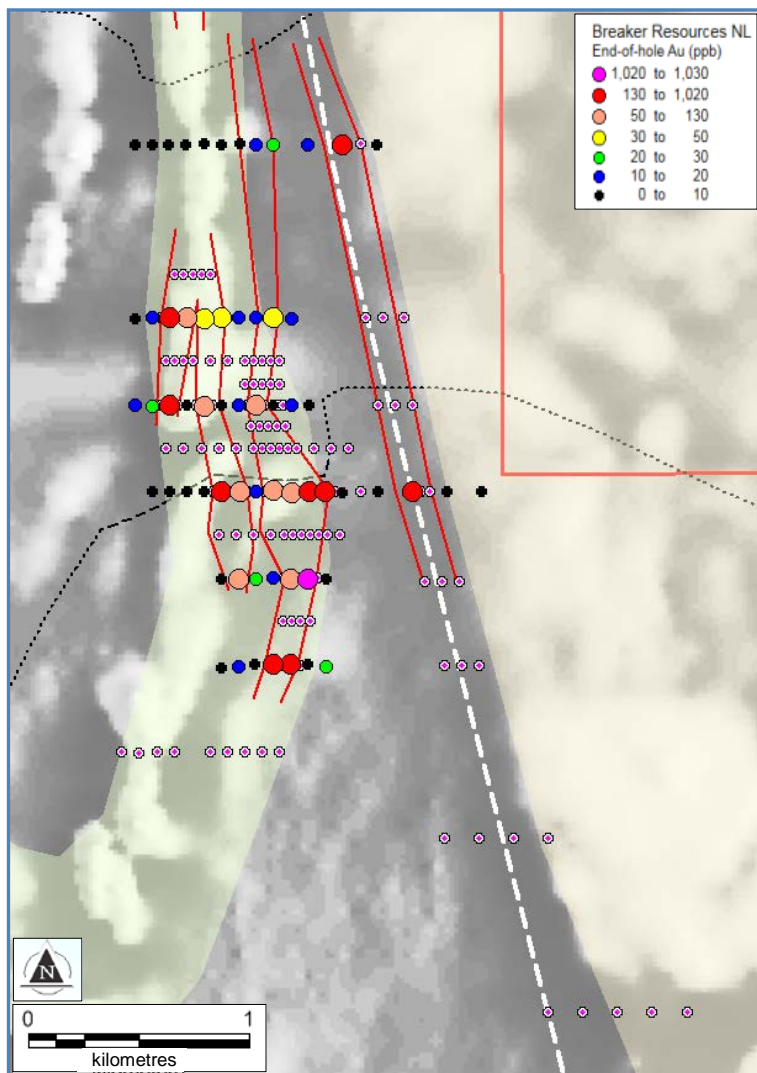
## End-of-Hole (EOH) Gold



- ✦ 1m end-of-hole samples define a mineralised (alteration) envelope up to 300m wide:
  - gold up to 1.03g/t Au\*
  - silver up to 0.99g/t Ag
  - tungsten up to 0.79% W
- ✦ These results are essentially a 2-D glimpse of the top of the bedrock and are unlikely to be representative of the primary zone
- ✦ The mineralised envelopes are likely to have internal structure but the geometry and grade of potential high grade feeder zones is currently an unknown ...RC or diamond drilling needed for this
- ✦ EOH sampling from upcoming infill aircore drilling to be used to plan follow-up RC/diamond drilling

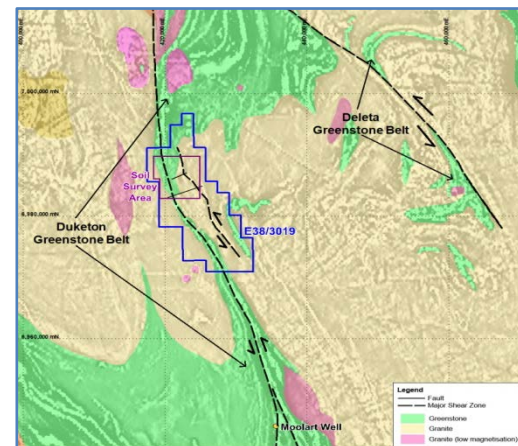
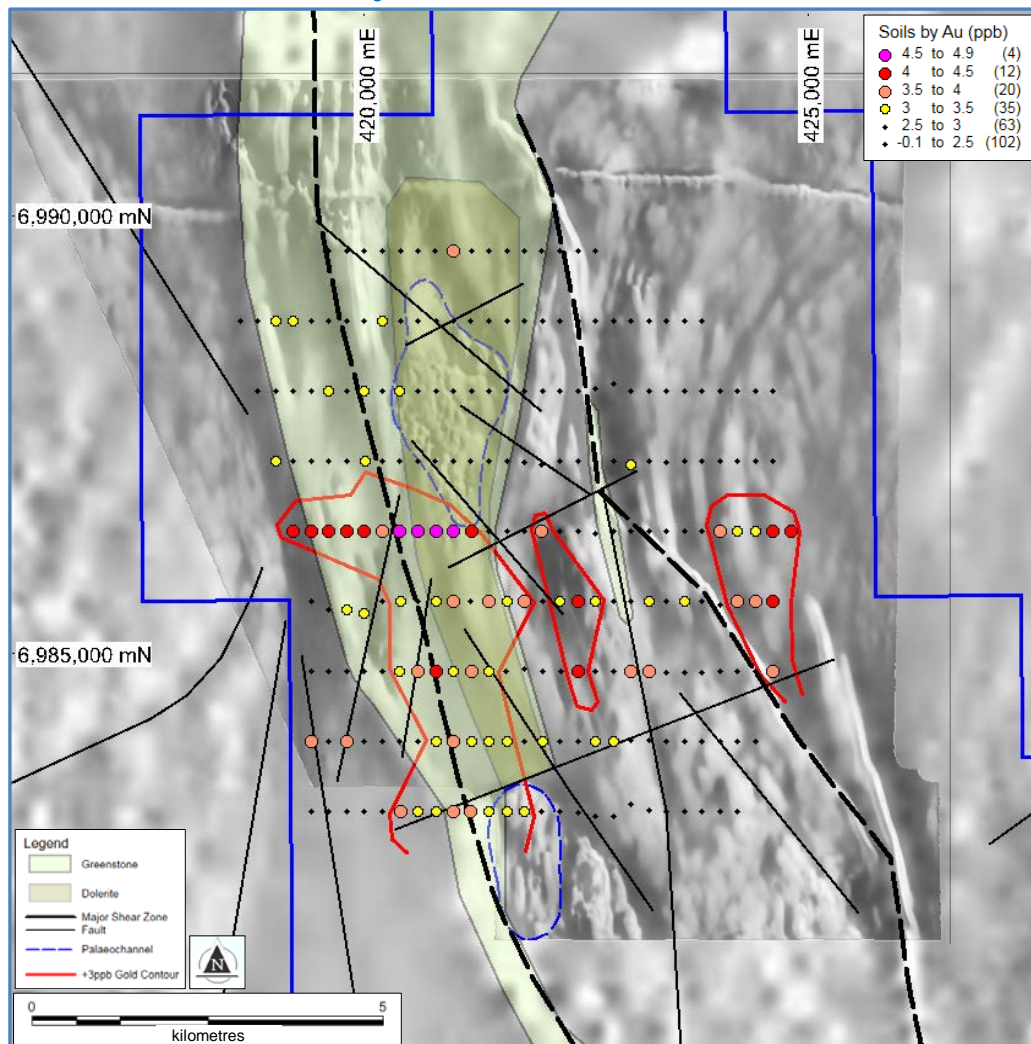
# Lake Roe - Planned Drilling

## Indicative Aircore Drill Plan



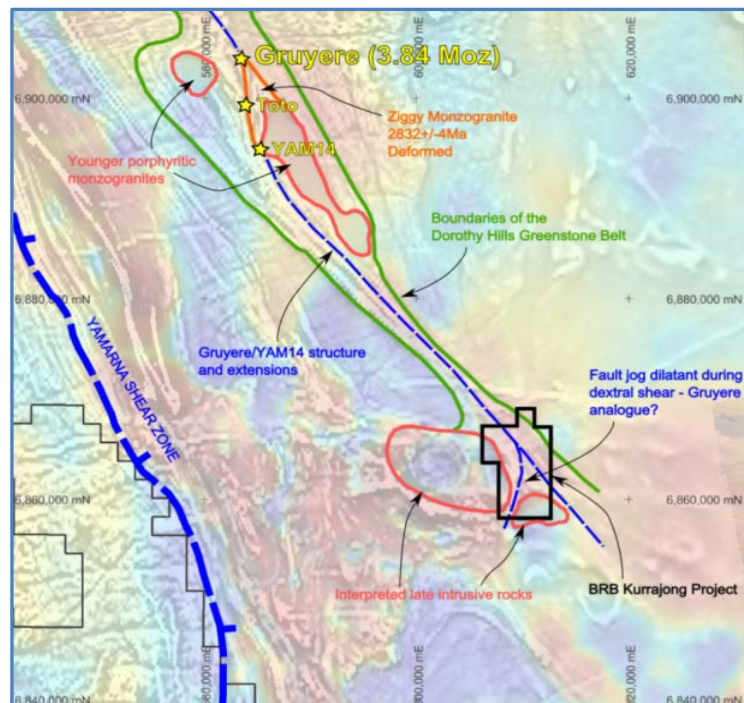
- ✧ Two phases of aircore drilling planned as a precursor to RC drilling
- ✧ Phase 1 of ~4,500m (circa 110 holes) planned to start ~29 Sept 2015 subject to regulatory approval
- ✧ The objectives of the aircore drilling are to:
  - test continuity of oxide mineralisation on Lake Roe and Claypan Zones (progressive infill)
  - test southern extent of mineralisation
  - increase the resolution of the EOH chemistry (to clarify geometry of bedrock mineralisation)
- ✧ Establishing continuity of oxide mineralisation translates to discovery
- ✧ The indicative drill plan shown may be amended (analysis of recently received high resolution aeromagnetic data, etc.)
- ✧ Phase 2 – before Christmas based on Phase 1 results

## Duketon North Gold Project

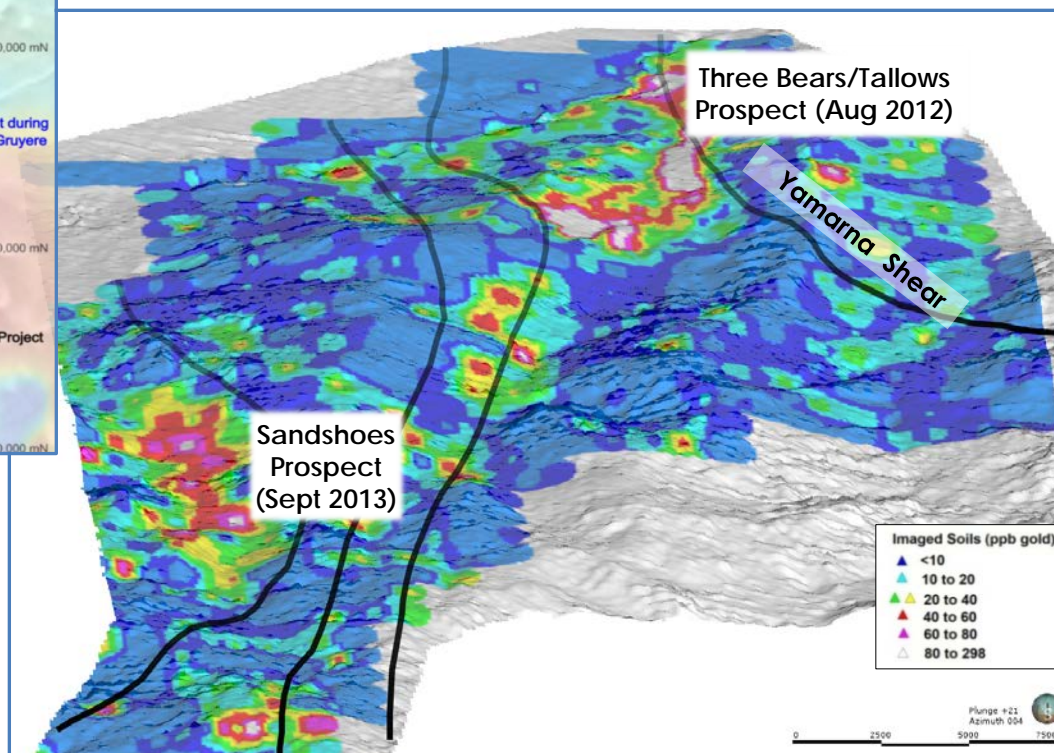


- ✦ 4km-long gold-in-soil anomaly identified over a major structural break on the Duketon greenstone belt\*
- ✦ May be faulted continuation of the Moolart Well mine sequence
- ✦ Coherent over a distance of 4km and a width of 1.2km (+3ppb gold cut-off)
- ✦ Known bedrock mineralisation trends into the anomaly area from the north

## Kurrajong Gold Project



## Dexter Gold Project



- ✦ Outstanding targets on other projects...these may be joint ventured to manage risk

- ✦ Significant oxide gold (up to 4m at 7.38 g/t in zone of 20m @ 1.93 g/t Au) has been identified in two separate zones up to 5km long at the Lake Roe Project.
- ✦ **The cohesion and dimension of the EOH results indicate a large new gold system** (up to 1.03g/t gold, 0.99g/t silver and 0.79% tungsten).
- ✦ Phase 1 aircore drilling of ~4,500m planned to start ~29 September 2015 subject to regulatory approval. Two phases of aircore drilling planned as a preamble to RC or diamond drilling to test the primary zone (ongoing news flow).
- ✦ **Aircore drilling is targeting DISCOVERY in two separate areas** by establishing the continuity and extent of oxide mineralisation. In this event, a significant re-rating of BRB is likely from a very low base (\$3.8M).
- ✦ BRB's other projects have significant discovery potential (eg. Duketon North, Dexter, Kurrajong Projects).
- ✦ Prospectus lodged\* for fully underwritten 1 for 5 rights issue at \$0.04 to raise up to \$553,755 to fund Lake Roe drilling. Directors are taking up their 26%.

## THANK YOU



### Competent Persons Statement

The information in this report that relates to Exploration Targets and Exploration Results is based on information compiled by Tom Sanders who is a Member of The Australasian Institute of Mining and Metallurgy. Mr Sanders is an officer of Breaker Resources NL and his services have been engaged by Breaker on an 80% of full time basis; he is also a shareholder in the Company. Mr Sanders has sufficient experience that is relevant to the style of mineralisation and type of deposit under consideration and to the activity being undertaken to qualify as a Competent Person as defined in the 2012 Edition of the 'Australasian Code for Reporting of Exploration Results, Mineral Resources and Ore Reserves'. Mr Sanders consents to the inclusion in the report of the matters based on his information in the form and context in which it appears.

The geotechnical information communicated in the slides in this presentation relating to Breaker Resources' exploration results prior to 1 December 2013, and its assessment of exploration completed by past explorers, was first prepared and disclosed under the JORC Code 2004. It has not been updated since to comply with the JORC Code 2012 on the basis that the information has not materially changed since it was reported.